



evolution

dog wash



OWNERS MANUAL

Notice

www.EvolutionDogWash.com

All Rights Reserved

Printed in USA

Proprietary Material

The information and descriptions contained herein are the property of The EVOLUTION DOG WASH COMPANY, an Applewood GJ, LCC company. Such information and descriptions may not be copied or reproduced by any means, or disseminated or distributed without the express written permission of The EVOLUTION DOG WASH COMPANY.

This document is for information purposes only and is subject to change without notice.

Statement of Limited Warranty

*Warranty of the equipment will be for two (2) years after the purchase and delivery of the Goods. Warranty covers all parts, accrued; however, the warranty does not cover labor costs. The warranty does not cover theft, destructive acts, or gross neglect to the Goods. The manufacturer (or, designated representative of the manufacturer) has the rights to inspect the Goods to confirm that the damage is covered under the warranty. **Warranty is considered voidable if Buyer does not use approved shampoo and disinfectant products Tropiclean (Specifically formulate for Evolution Dog Wash Company) and KennelSol, throughout the warranty period.***

No other warranty, express or implied, including any warranties of merchantability or fitness for a particular purpose is hereby made by Seller, and none shall be imputed or presumed.

P/N: OWNERS/OPERATORS MANUAL

April 2020 (Rev 04)

TABLE OF CONTENTS

1.0 ABOUT US	5		
1.1 Contact Information	5		
2.0 INTRODUCTION	6		
2.1 Principle of Operation	6		
2.2 Models	7		
2.3 Options	8		
2.4 Specifications	9		
2.5 Requirements	9		
2.6 Dimensions and Weights	9		
2.7 Dimensional Drawings	10		
2.7 ADA Compliance	11		
2.7.1 ADA Drawings	11		
2.7.2 ADA Compliance Document	11		
3.0 INTRODUCTION	15		
3.1 Safety and Caution Notes	15		
4.0 INSTALLATION	16		
4.1 Receiving Unit-Condition Inspection	16		
4.2 Uncrating and Positioning	16		
4.3 Leveling and Securing the Unit	17		
4.3.1 Leveling Unit	18		
4.3.2 Securing Unit	19		
4.4 Utility Connections	19		
4.4.1 Sanitary Sewer	19		
4.4.2 Water	22		
4.4.3 Electrical	22		
4.4.4 Electrical Breaker Box Schematic	23		
4.4.5 <i>Electrical for Opt. Water Heater</i>	24		
4.5 Layout Suggestions	24		
5.0 Turn On & Setup	25		
5.1 Initial Turn On	25		
5.1.1 Electrical	25		
5.1.2 Water	26		
5.1.3 Opt. Water Heater Electrical	26		
5.2 Setup	27		
5.2.1 Shampoo / Disinfectant Products	27		
		5.2.2 Product Setup	28
		5.2.3 Product Dispensing Pumps	29
		5.2.3.1 Pump Priming	30
		5.2.4 Thermo Water Mixing Valve	33
		5.2.5 Water Pressure Regulator	33
		5.2.6 Solenoid Maintenance	34
		5.2.7 Digital Timer Setup	36
		5.2.7.1 Digital Timer Programming	36
		6.0 Operating The Unit	39
		6.1 Operations	39
		6.1.1 Manual Operations	39
		6.1.2 Customer Operations	39
		7.0 Maintenance	41
		7.1 Cleaning Procedures	42
		7.2 Schedules	43
		7.2.1 Daily	43
		7.2.2 Monday and Friday	43
		7.2.3 Monday and Friday	43
		7.2.4 Monthly	43
		7.2.5 Bi-annually	43
		7.2.6 Annually	43
		7.3 Note Acceptor Maintenance	44
		7.4 Coin Acceptor Maintenance	45
		7.5 Dryer Filter Maintenance	45
		7.6 Other Support Pictures	46
		8.0 EVOLUTION Parts Identification	47
		8.1 Outside The EVOLUTION	47
		8.2 Inside The EVOLUTION	48
		8.3 EVOLUTION Door Layout	49
		8.3.1 EZ and EZ Plus Models	49
		8.3.3 PLC Model	50
		8.3.4 Touch Model	51
		9.0 Troubleshooting	52

10.0	MSDS Sheets	54
10.1	Shampoo – Berry Clean	54
10.2	Flea and Tick Shampoo – Opti-Neem	55
10.3	Moisturizer – Kiwi Moisturizer	56
10.4	Disinfectant – KennelSol	57

1.0 ABOUT US



Evolution Dog Wash Company holds the dominant position in the self-serve dog wash industry. The Evolution Dog Wash is a quantum leap forward in the self-serve dog wash industry, employing technology only used in the world's most advanced Informational applications, each EVOLUTION system is built by hand with the specifications of each client. Since the dog wash system is manufactured in the United States, it can be shipped to your business quickly. Replacement parts and repairs can also be made fast.

While other dog wash companies claim to have great products and knowledge, Evolution Dog Wash Company is the only self-serve dog wash company whose sole mission is to provide the best quality dog wash along with providing the most qualified and informed team of experts. While other companies offer a dog wash as part of their business, the only purpose of Evolution Dog Wash Company is to provide the best self-serve dog wash in the world.

Evolution dog wash can also be used for other purposes, such as routine dog grooming or bathing other small animals.

1.1 Contact Information

Evolution Dog Wash Company
13401 W 43rd Dr, Suite 13
Golden, CO 80403
Phone: 800.426.0760
Web: www.EvolutionDogWash.com



2.0 INTRODUCTION

2.1 Principle of Operation

The Evolution Dog Wash is a fully self-contained machine designed for the wash and care of dogs, cats, and other animals appropriate for bathing. The aircraft grade stainless steel cabinet is designed for indoor or outdoor use in a controlled or standalone configuration. The unit consists of currency acceptance in the form of coins, tokens, and notes. It also has the optional capabilities to accept credit cards. A timing device is used in conjunction with the currency or credit card acceptance to control the amount of wash time provided to the unit. A selection control allows the user to select one of several functions to groom their animal. Shampoo, Flea and Tick Shampoo, Rinse, Low Blow, High Blow, and Disinfectant are the selections. A controlled wash area is included in the unit. A swing door allows larger animals to step into the compartment for washing. There are tether points in the unit that can be used to control and constrain the animal. A three-part filtering system is provided to strain any animal hair from entering the sanitary sewer system. An operator key is provided for maintenance and cleanup of the unit.

The user places their animal into the unit's wash compartment and secures them. They then pay for their cycle using one of the methods described above. Once the turn on price is satisfied, they began to wash their animals using the selections and the spray hose and nozzle of the unit. Once they have washed their animal then they can blow dry them using the provided blower.

2.2 Models

ALL OF OUR MODELS COME WITH THESE FEATURES



- ✓ Proudly Made in the USA 
- ✓ Aircraft Grade Stainless Steel
- ✓ Triple Filtration Drain System
- ✓ Complete 2-Year Warranty
- ✓ Superior Quality
- ✓ Low Maintenance



EZ / EZ+ Rotary Dial



PLC / PLC+ Touch Buttons



Touch Model Screen

DOG WASH MODELS

FEATURES	EZ	EZ+	PLC	PLC+	Touch
Rotary Dial Control	✓	✓			
Easy Touch Push Button Control			✓	✓	
Cascading Lights to Attract Customers			✓	✓	
LCD Touch Screen Panel Control					✓
Integrated 1 Speed 4-HP Commercial Grooming Dryer	✓				
Integrated 2 Speed 8-HP Commercial Grooming Dryer		✓	✓	✓	✓
3 Product Selection: Shampoo, Conditioner, Disinfectant	✓				
4 Product Selection: Shampoo, Flea/Tick Shampoo, Conditioner, Disinfectant		✓	✓	✓	✓
Internet Control & Reporting Enabled				✓	✓
Easy Report Log via Touch Screen: Daily, MTD, YTD Wash Count & Income Tracking				✓	✓

**Warranty is considered voidable if Buyer does not use approved shampoos and disinfectant products throughout Warranty period.*

SELECTABLE OPTIONS	
Coin & Token Acceptor	Internal Electric Water Heater (20 gallon)
Bill Acceptor \$1, \$5, \$10	External Multi Media 32" TV Monitor
Credit Card Reader	Remote Control for Timer Settings & Reporting
	Custom Colors / Logos Contact Us For Pricing

www.evolutiondogwash.com

800.426.0760

info@evolutiondogwash.com

2.3 Options

Manually Operated

Owner operators that want to offer the dog wash as a free amenity can request the Manual Mode/Push to Start Option. A simple push button will be installed to initiate the wash cycle.

Coin & Token Acceptor

All Evolution Models can be configured with a Coin & Token acceptor. The Coin & Token acceptor accepts both quarters, for a value of \$0.25, and Evolution provided Dog Tokens, only one Dog Token is required to initiate the wash cycle.

Bill Acceptor

All Evolution Models can be configured with a Bill / Note acceptor. The Bill acceptor accepts \$1, \$5, and \$10 bills, once the full amount of the wash charge is reached the unit will initiate the wash cycle.

Credit Card

All Evolution units can be configured with Credit Card acceptance. We can build the unit with credit card readers made by; Nayax, ePort by USA Technologies, or CryptoPay. Owner Operators are responsible to set up accounts with the appropriate Credit Card manufacture.



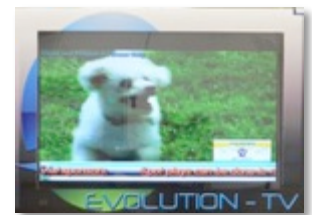
20 Gal. Water Heater

An internal electric 2000-Watt 20 Gallon Water Heater¹ can be selected when the installation cannot provide a Hot Water supply to the unit.



Multi Media TV

All Evolution units can be fitted with an embedded multimedia TV, used for advertisement, news/weather, and more.



Internet Connection and Reporting (PLC+ model)

The PLC + model comes with a Human Machine Interface (HMI) computer that has many features to assist in data sampling and data logging. Data is collected and stored as multiple files for later retrieval in the internal memory of the HMI. Data can be retrieve via an internet connection or as needed from the touch panel displayed of the HMI located inside the cabinet.



2.4 Specifications

- Aircraft Grade 304 B Stainless Steel Construction
- Self-Contained Cabinet for Interior or Exterior Operations
- Triple Redundant Exterior Locking
- Key Secured Cabinet housing all electronics, products, and collected money
- Water Usage – 1.7>2.5 GPM (8-13G per wash)
- Standard wash charge is programable
- Wash Cycle Cost is approx. \$0.95 - \$1.20 (estimated for a 10 minute wash cycle)

2.5 Requirements

- Water (Required)
 - Cold Water Line 20-60 PSI/2.0 GPM
 - Hot Water¹ Line 20-60 PSI/2.0 GPM
- 2" Sanitary Sewer Waste (Required)
- 120 Volts AC 30 Amps Hardwired Dedicated Circuit (Required)²

2.6 Dimensions and Weights

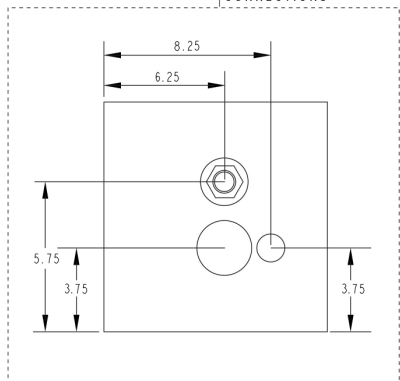
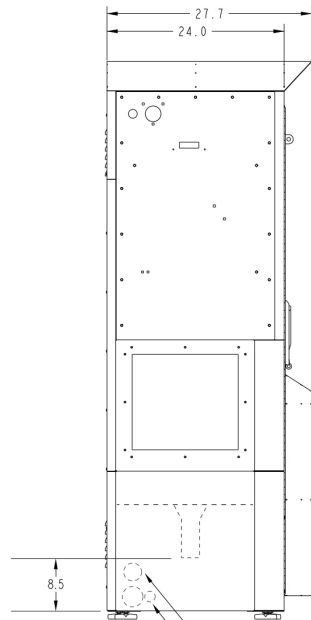
- Length 79.5" / Height 74.6" / Depth 27.7"
- Weight 750 Pounds³
- Crated Weight 1000 – 1050 lbs. approx.

¹ Hot Water Supply Line is optional. If a hot water supply is not available, the Internal Water Heater option must be selected. An additional 120 Volt AC/ 20 Amp circuit is required to drive the water heater.

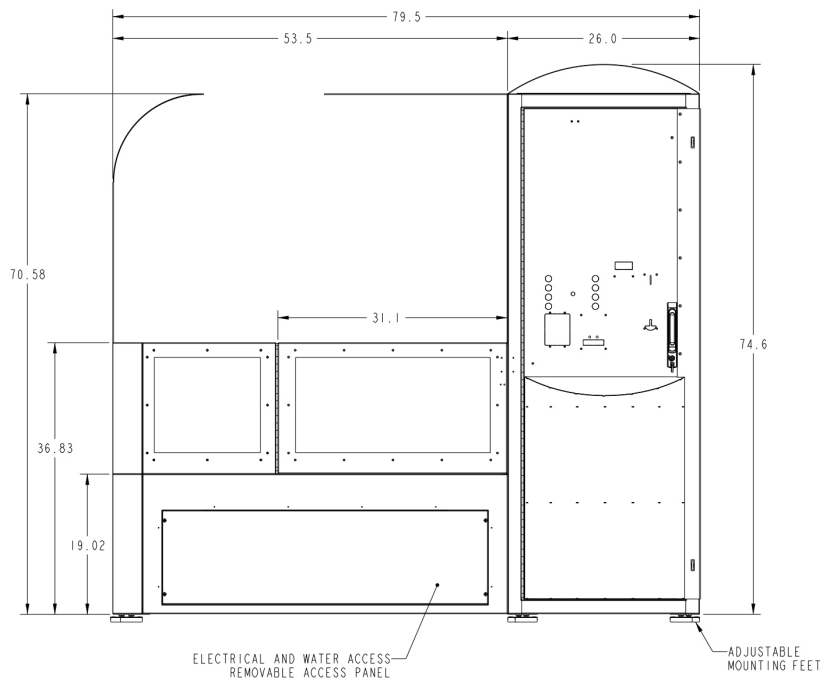
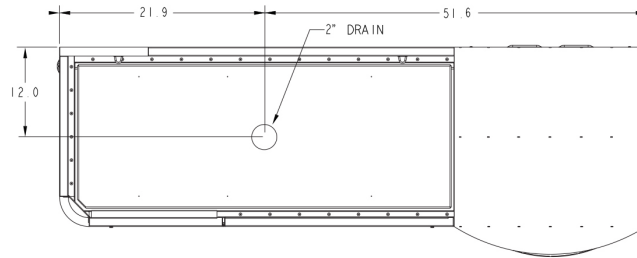
² Main power to the unit should be on a dedicated circuit, not shared with other devices or equipment.

³ Add 65 lbs. with optional water heater

2.7 Dimensional Drawings



*WATER SUPPLY LOCATED INSIDE CORNER OF CABINET

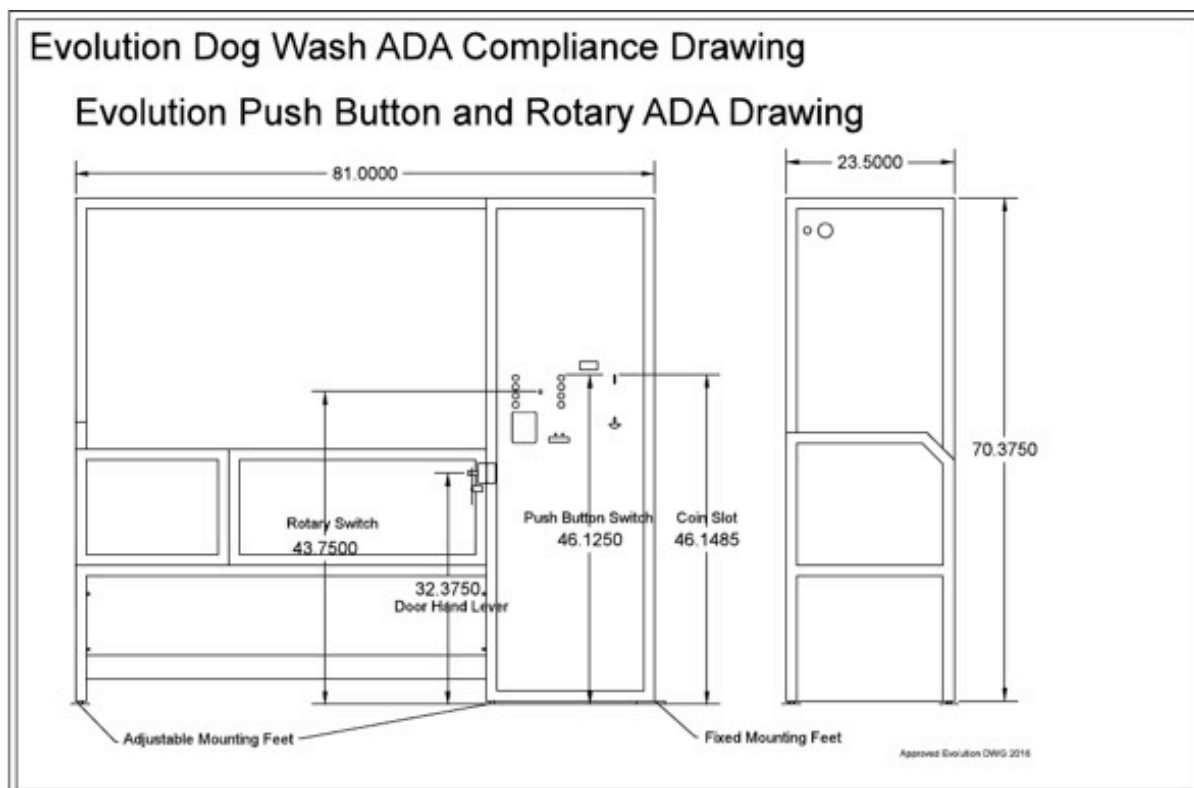


2.7 ADA Compliance

In the Quality Process of the Evolution Dog Wash, we are always striving to make things better and applicable to our customer's wants/needs. One such item is the ADA Compliance in regards to Title III of the ADA, which states that *"individuals with disabilities are entitled to equal enjoyment of the goods and services of a public accommodation. Public accommodations include businesses that provide goods and services to the public."* And also according to Title II of the ADA which requires *"that programs offered by State & Local Governments be made available to people with disabilities."*

2.7.1 ADA Drawings

The following is an independent study of the Evolution Dog Wash for ADA compliance.



2.7.2 ADA Compliance I



1225 NORTH LOOP WEST, SUITE 935, HOUSTON, TX 77008
(713)864-8494
WWW.ACICO.COM

September 18, 2017

Matt Ogden
Evolution Dog Wash

Re: ADA Compliance

Dear Mr. Ogden,

You requested that I review the design of the Evolution Dog Wash system for compliance with the Americans with Disabilities Act (ADA) and Fair Housing Act. The purpose of this letter is to describe how the features of this system comply with the requirements of the ADA/FHA and to identify installation issues that must be considered to ensure compliance.

Applicability of the ADA and FHA

Title III of the ADA states that individuals with disabilities are entitled to equal enjoyment of the goods and services of a public accommodation. Public accommodations include businesses that provide goods and services to the public.

Title II of the ADA requires that programs offered by State & Local Governments be made available to people with disabilities.

The Fair Housing Act includes design requirements for the construction of multi-family housing. These design requirements require that at least one of each type of amenity offered must be accessible. The dimensional requirements for the FHA are equivalent to the ADA Standards.

If the Evolution Dog Wash is made available for public use on either private or public property it will be required to comply with either the ADA or FHA.

Page 2

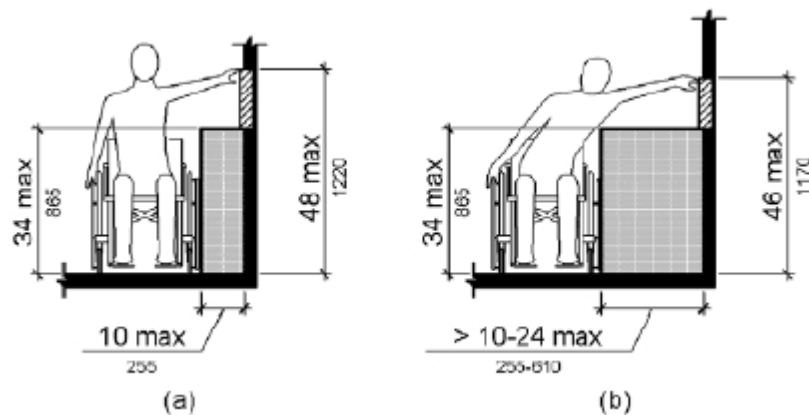
Dimensional Requirements

The ADA and FHA have equivalent requirements. The following relevant sections are excerpted from the 2010 ADA Standards.

The Evolution Dog Wash system has been designed to comply with the following requirements for reach range to operable parts. All controls necessary for normal operation including buttons, coin slots, soap dispensers, water hoses and blower hose are within the 48" high maximum reach range for an unobstructed side approach. With the gate closed, the water hose and blower hose are within the 46" maximum high reach range for an obstructed side approach.

308.3.1 Unobstructed. Where a clear floor or ground space allows a parallel approach to an element and the side reach is unobstructed, the high side reach shall be 48 inches (1220 mm) maximum and the low side reach shall be 15 inches (380 mm) minimum above the finish floor or ground.

308.3.2 Obstructed High Reach. Where a clear floor or ground space allows a parallel approach to an element and the high side reach is over an obstruction, the height of the obstruction shall be 34 inches (865 mm) maximum and the depth of the obstruction shall be 24 inches (610 mm) maximum. The high side reach shall be 48 inches (1220 mm) maximum for a reach depth of 10 inches (255 mm) maximum. Where the reach depth exceeds 10 inches (255 mm), the high side reach shall be 46 inches (1170 mm) maximum for a reach depth of 24 inches (610 mm) maximum.



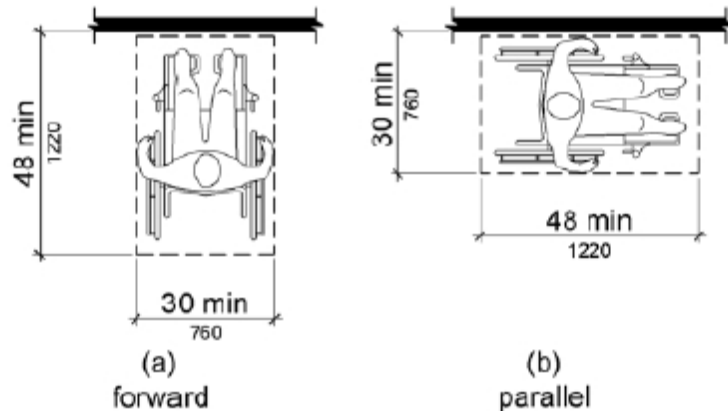
The controls on the Evolution Dog Wash system comply with the requirements for operable parts and do not include tight grasping, pinching or twisting of the wrist to operate.

309.4 Operation. Operable parts shall be operable with one hand and shall not require tight grasping, pinching, or twisting of the wrist. The force required to activate operable parts shall be 5 pounds (22.2 N) maximum.

The Evolution Dog Wash system must be located in an accessible location that is accessed by a 36" wide minimum accessible route. A clear floor space the full width and 30" deep measured perpendicular to the appliance shall be provided. This floor space shall not have slopes greater than 1/4" per foot. The floor surface must be firm, stable and slip resistant. Gravel and grass areas are not recommended.

302.1 General. Floor and ground surfaces shall be stable, firm, and slip resistant and shall comply with 302.

305.2 Floor or Ground Surfaces. Floor or ground surfaces of a clear floor or ground space shall comply with 302. Changes in level are not permitted. EXCEPTION: Slopes not steeper than 1:48 shall be permitted.



The Evolution Dog Wash has been designed to be usable and accessible to all. This equipment complies with the intent of the ADA to provide equal enjoyment of goods and services to people with disabilities.

Please call if you have any questions.

Sincerely yours,

AMERICAN CONSTRUCTION INVESTIGATIONS, LTD.

Jeromy G. Murphy, AIA, RAS
Director, Accessibility & Code Consulting Services

3.0 INTRODUCTION

3.1 Safety and Caution Notes

Caution Symbol



Anytime this symbol is displayed, special note should be made to observe the care of this particular function.



WARNING Risk of electrical shock! The EVOLUTION Dog Wash is powered with an electrical minimum of 120 Volts AC, 50/60 Hz / 30 amps. A dedicated 30-amp circuit⁴ should be hard wired to the unit at the provided attach point inside the main cabinet. A qualified electrician should only make this connection. All local codes should be followed as well as National Electrical Code (NEC). Branch circuit protection is provided on the unit meeting or exceeding UL1077 and/or UL489 ratings. This unit is supplied with a grounding source that should have its integrity maintained. To reduce the risk of shock, be certain that it is connected only to a properly grounded, grounding type buss with ratings conforming to NEC codes. Prior to any maintenance on the unit, disconnect the unit from the electrical power source. Failure to comply with the previous statement may void the EVOLUTION Dog Wash warranty.



Plumbing Precautions

The EVOLUTION Dog Wash requires a minimum of 20 PSI and maximum of 60 PSI at 2.0 gpm of water flow for proper operation. Failure to provide the requirements may cause the unit to not perform as designed. To ensure a safe installation, all plumbing connections should be made by a qualified, licensed plumber familiar with local and national plumbing code. Any and all exposed plumbing connections should be weather proofed to prevent damage to the plumbing and unit. The EVOLUTION Dog Wash Company is not responsible for failure or operational errors due to improper installation. Failure to comply with the previous statement may void the EVOLUTION Dog Wash warranty.



Wash Products and Disinfectant

The EVOLUTION Dog Wash was designed around the wash products provided with the unit, TROPICLEAN and KENNELSOL. The solution ratios suggested in this manual are for those products only. Failure to use these products throughout the warranty period makes the warranty voidable.

⁴ This circuit is for the main power to the unit. An additional dedicated 110 Volt AC / 20 Amp circuit is required if the unit comes with the optional water heater.

4.0 INSTALLATION

4.1 Receiving Unit and Condition Inspection



4.1.1 Caution Heavy Crate

Extreme caution should be taken when the EVOLUTION Dog Wash has been delivered and is being unloaded. The unit will weigh between 1000 and 1065 lbs. crated. Equipment designed to handle this type of load should be used with qualified personnel operating it.

4.1.2 Unit Inspection

The EVOLUTION should be inspected prior to accepting shipment. Note any damage to the unit crating or unit itself. If damage is substantial EVOLUTION Dog Wash Company should be contacted immediately, failure to do so may void warranty and claim.

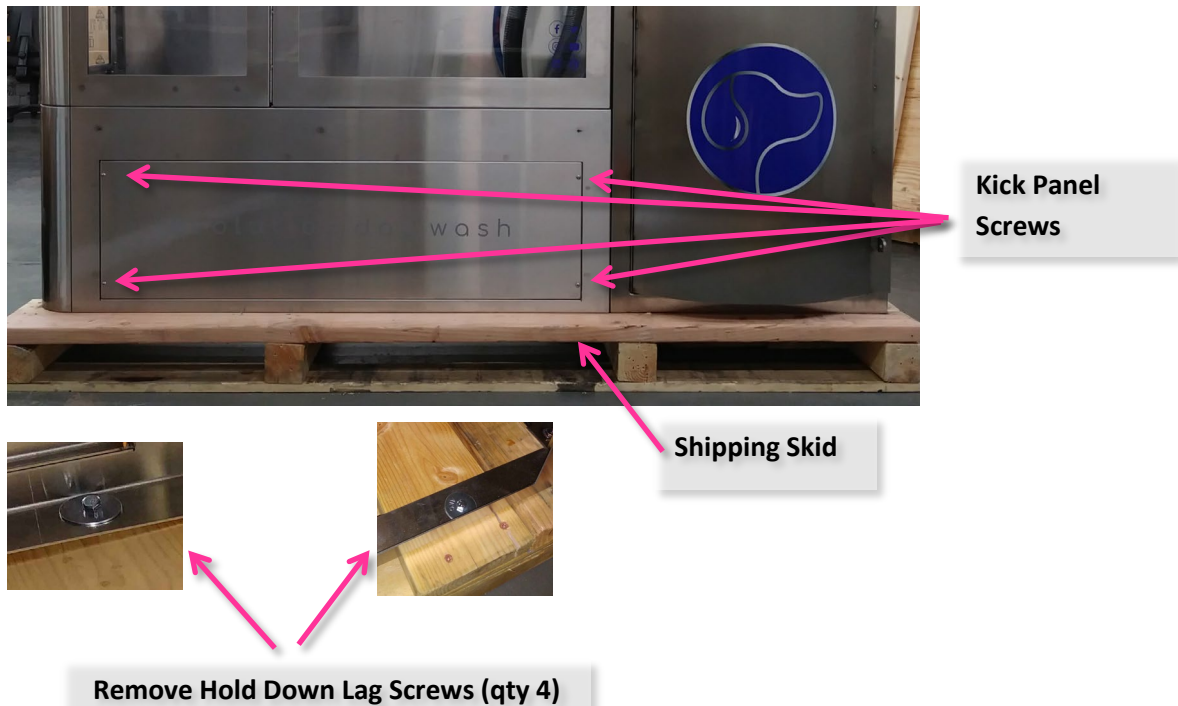


4.2 Uncrating and Positioning

The EVOLUTION is crated with care to prevent damage to the unit during shipping. Upon receiving the unit, carefully remove the exterior crating and dispose of properly. Caution should be used when removing crating for exposed and jagged wood edges and/or exposed nails and fasteners.

Remove all boxes and wrapping from the unit and set aside. DO NOT use a razor knife when removing wrappings to prevent possible damage to decaling or stainless-steel surface.

Remove the Kick Panel by the 4 screws that hold the panel in place. The unit is mounted on a shipping skid that is held in place with 4 lag screws. Prior to removing this skid, it is recommended to position the unit in close proximity of its final location. Remove the lag screws in the shipping skid to remove it from the unit and position the unit into the final location leaving adequate room to access the unit to connect to water, electricity, and sanitary sewer.



4.3 Leveling and Securing the Unit

4.3.1 Leveling Unit

There are six leveling feet on the bottom of the unit. You will want to level the unit both front to back and side to side. First place the level on the wash compartment door and adjust the feet to level the unit side to side. Then place the level on the top of the cabinet, (prior to attaching the “hat”), and adjust the feet to level front to back. Note it is acceptable for the front to be slightly higher than the back.

Use Extreme Caution in adjusting the leveling feet, you may have to tilt the entire machine just slightly to adjust leveling feet.





4.3.2 Securing Unit

While the Evolution Dog Wash is a very stable unit and will not operate properly without being tied down, some Cities may have building codes which require equipment to be secured in place. If required, once leveled, the unit can be anchored into place by screwing or bolting the unit to the floor/substrate via the frame hold down wholes. Please refer to your local building codes to determine requirements.

(4.3.3) Add Section:

4.3.3 Attaching the “Hat” to the Cabinet

The “Hat” is shipped in a separate box and needs to be attached to the top of the cabinet as shown below. Place the Hat on the cabinet and secure to the cabinet by connecting the nuts to the inside of the cabinet ceiling.



4.4 Utility Connections



A qualified installer should do all utility connections; failure to do so may cause injury or equipment damage. Any equipment damage done due to incorrect installation and hookup will void equipment warranty.

4.4.1 Sanitary Sewer

All plumbing connections should follow the local and national plumbing codes and requirements. A 2” Sanitary Sewer connection is required for drainage. If working from the

front of the unit, remove the 4 bolts holding the front access panel to the unit, remove access panel taking caution to protect decal.



Kick board Access Panel

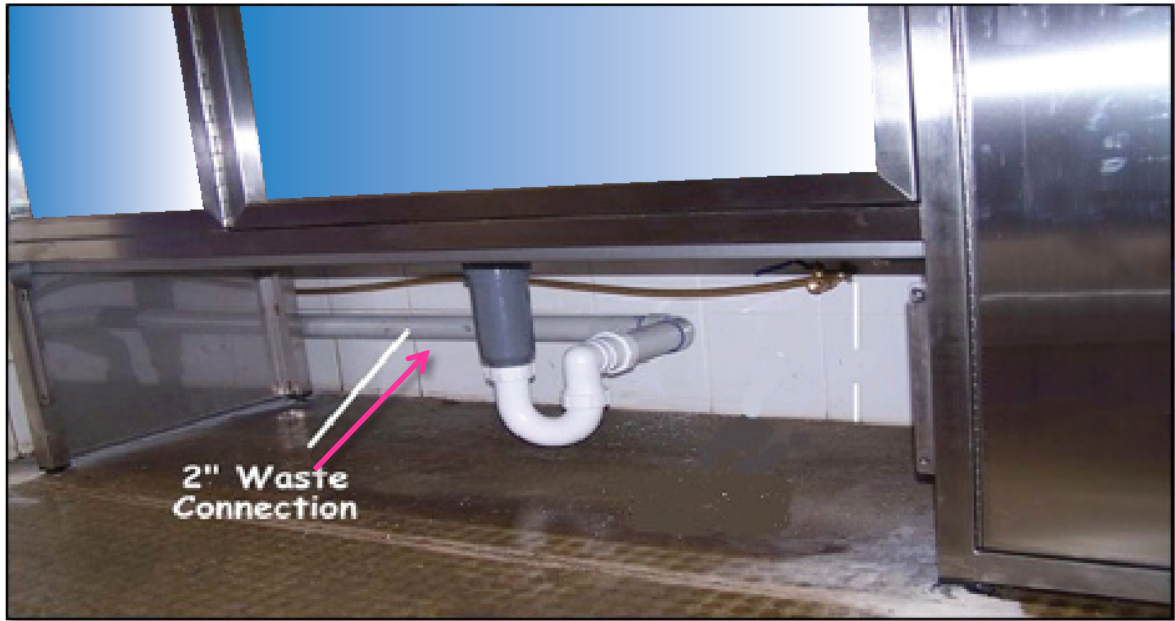
The drain is located in the center of the dog wash compartment ~9" above the surface of the floor



**Drain in center of wash compartment
~8.5 – 9" above the surface of the floor**

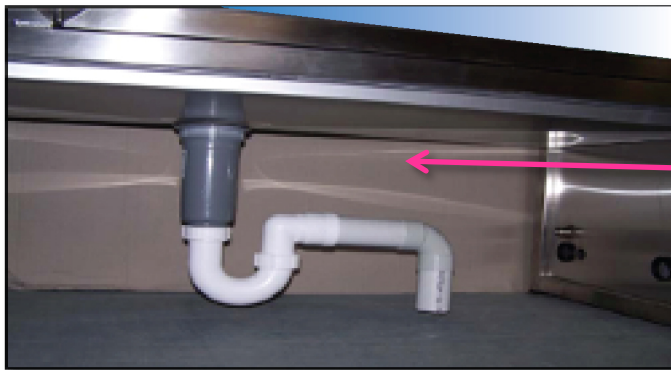


Connect the provided 2" sanitary connection to the unit's drain. A P-Trap should be installed per local and national codes to prevent backflow of possible dangerous sewer gases.



Shown above is a drain installed into an existing room, so the connection points were run along the wall.

Shown below is a drain installed with the drain located directly under the wash area.



No panel on the back of the dog wash frame in this area

4.4.2 Water

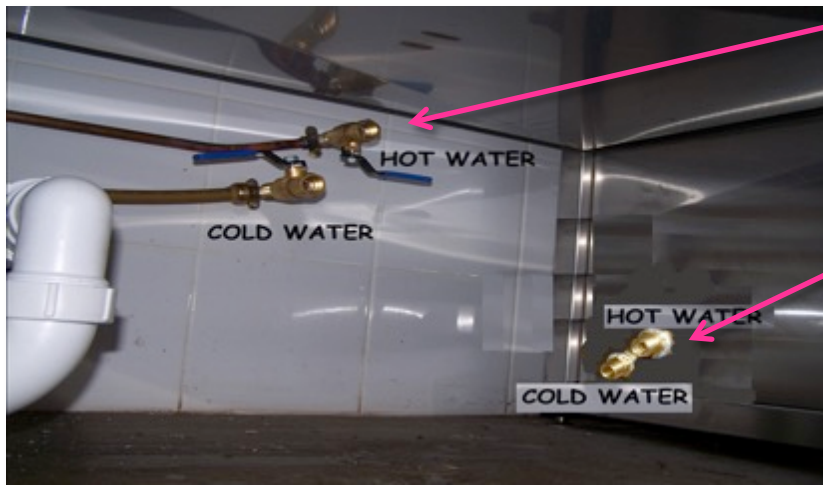
Water connection should be brought to the unit with external shut off valves to assist in connect and disconnect functions. Adequate water lines should be used that will support the necessary water pressure needed.

½" Female / ¾" Male - pipe threads fittings are provided on the unit for water supply connections. Connect water supply lines to these fittings.⁵

Water (Required)

Cold Water Line 20-60 PSI/2.0 GPM

(Optional) Hot Water Line 20-60 PSI/2.0 GPM

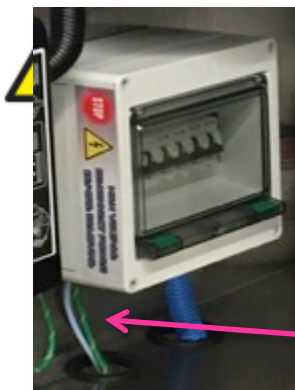


Shut off Valves

Water Supply Fittings

4.4.3 Electrical

⚠ DANGER

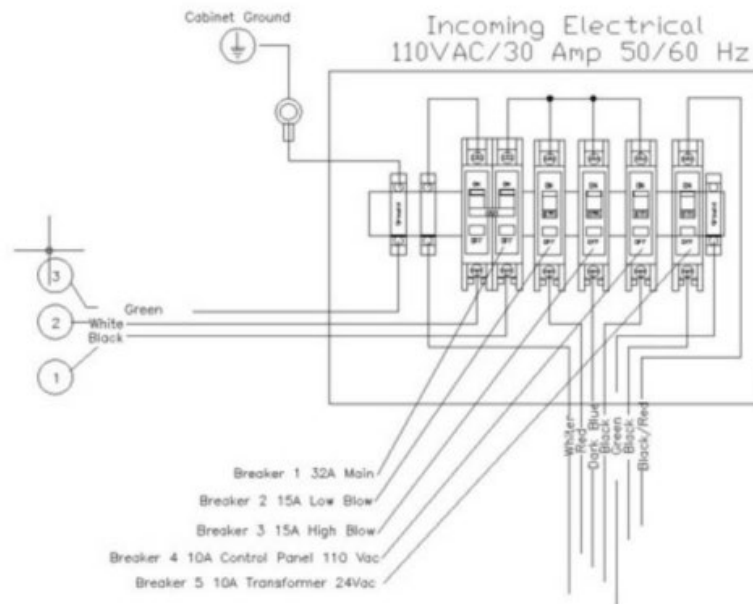


A qualified electrician should only make the electrical connections to the unit aware, trained, and skilled in the connection of electrical components. An untrained person performing these functions risks the chance of serious injury or possibly death. Provide a 120 Volt AC 30 Amp Dedicated circuit to the unit. Observe all local and national codes when providing power to the unit. This circuit is for the unit alone, no other appliance should be connected to this circuit.

Connect Dedicated 120 VAC / 30 Amp circuit through hole and into bottom of electrical panel.

⁵ There will not be a hot water plumbing connection if a water heater is provided.

4.4.4 Electrical Breaker Box Schematic



Breaker Legend

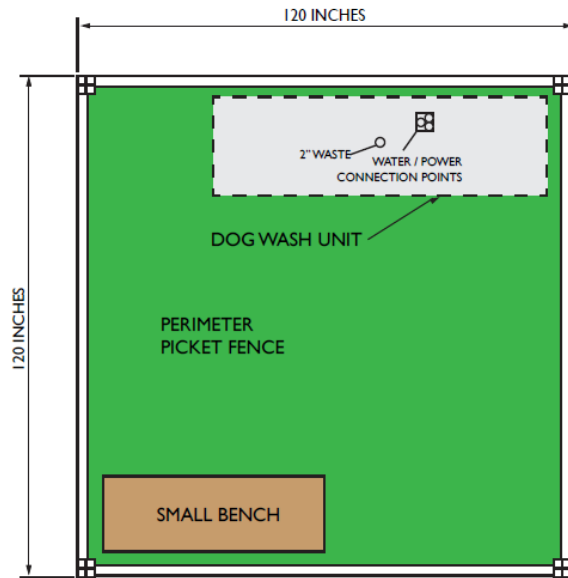
- 1 - 110VAC Neutral – White –Main Power – 32 Amp - Double
- 2 - 110VAC Source – Black – Main Power – 32 Amp - Double
- 3 - 110VAC – Red – Low Blow – 15 Amp - Single
- 4 - 110VAC – Blue – High Blow – 15 Amp – Single
- 5 - 110VAC – Black – Control Pnl Pwr – 10 Amp Single
- 6 - 24VAC – Black/Red – 24VAC Transformer – 5 Amp Single



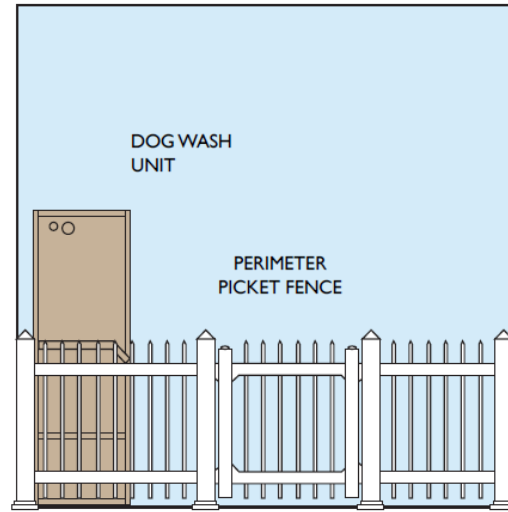
4.4.5 Electrical for Optional Water Heater

As an option, a 20-gallon water heater may be purchased. In the event it is provided it will require a dedicated 20-amp circuit to operate. A qualified electrician will be able to provide this circuit and connection. By no means should the main circuit for the unit be used for this connection. Failure to observe this warning will void warranty with risk of damage to the unit.

4.5 Layout Suggestions



SUGGESTED DOG
WASH AREA



STANDARD SYSTEM REQUIREMENTS

POWER 1	110V	30A Only
POWER 2	110V	20A Optional Hot Water
WATER	HOT	1/2" Ball Valve
	COLD	1/2" Ball Valve
WASTE	2" Diameter Outlet	

5.0 Turn On & Setup

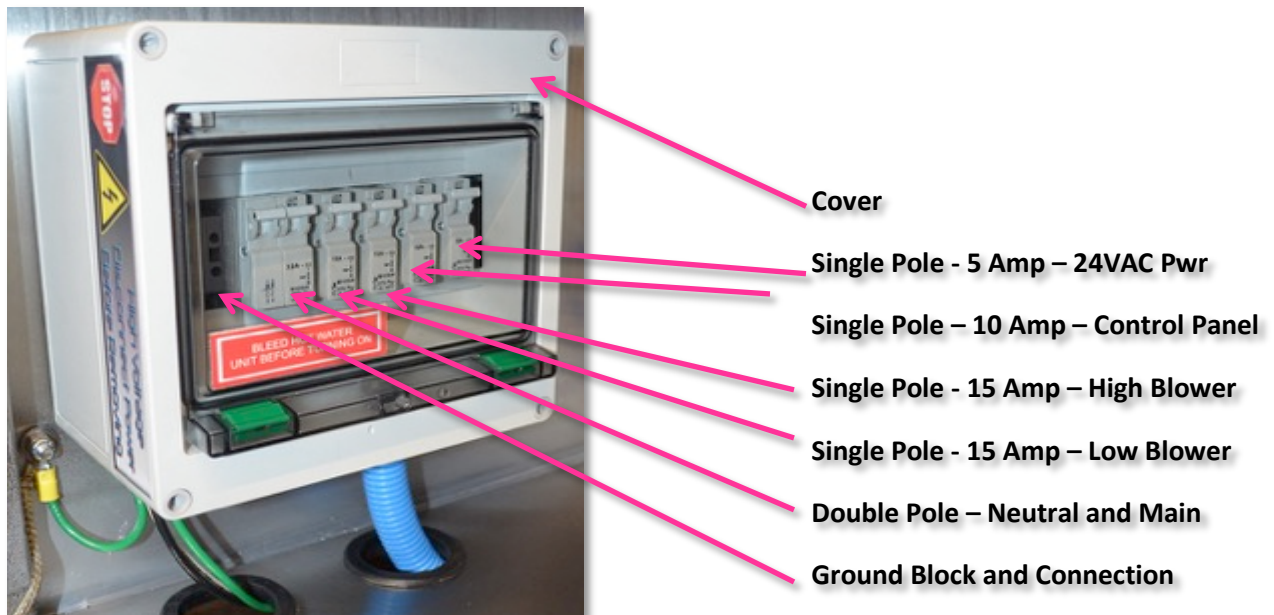
The EVOLUTION comes to you fully wet/electrically tested. The unit is then labeled, drained, and prepped for shipping. The following topics will guide you through the turn on and setup.

5.1 Initial Turn On

Prior to turn on inspect the unit to ensure that it is level and secure, electrical source has been provided, water connections have been made, and sanitary sewer connection has been made.

5.1.1 Electrical

Turn the main breaker or disconnect on to the system (not part of the EVOLUTION). Open the main door and lift the cover to the electrical panel located to the left of the cabinet and turn on (up) each breaker⁶, if breakers are not in the off (down) position, turn off (down) then turn on (up)



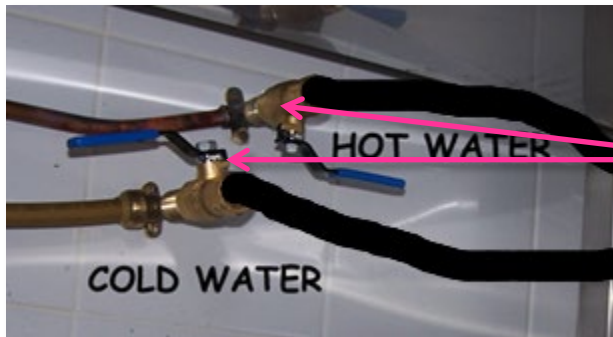
You should observe the digital timer display light up and start scrolling. You will also hear a low beep as the digital display powers up. If equipped, you will see the (optional) credit card display power up and also beep.



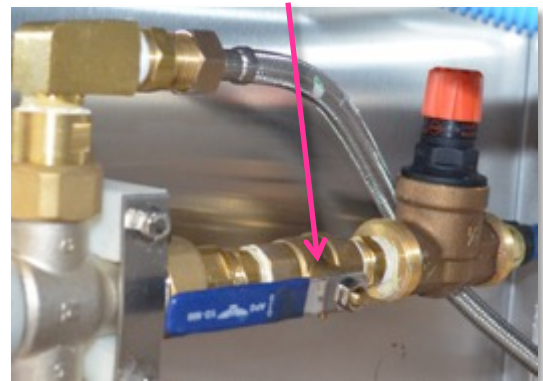
⁶ Due to manufacture change or redesign the pictures depicted may not fully represent your unit.

5.1.2 Water

Turn on the water valves that connect the unit to the water supply. Observe connections for leaks by looking for puddling water in and around the unit.



Water Valves



Open the main door and check to ensure that the main valve is horizontal to the plumbing. These valves allow water to flow through the system.



5.1.3 Optional Water Heater Electrical and Prepping

As an option, a 20-gallon water heater may be purchased. If the water heater is provided it will require a dedicated 20-amp circuit to operate. A qualified electrician will be able to provide this circuit and connection. By no means should the main circuit for the unit be used for this connection. Failure to observe this warning will void warranty with risk of damage to the unit. In addition to a separate dedicated circuit the electrician must provide circuit protection adequate to the circuit in accordance to NEC. A separate connection and cutoff point will be required to include this circuit. By NO means should the main circuit breaker box of the unit be used for the drop point of this circuit.



Factory Installed Water Heater

Temperature and Pressure (TP) Valve



NOTICE: Prior to turning on the power to the water heater, it must be filled with water. This is accomplished by 1) Opening the TP Valve located on the top of the heater, 2) Turning on the supply water until water flows out of the TP Valved, 3) Shut TP Valve. It is now safe to turn on the power to the heater.

5.2 Setup




The EVOLUTION requires a minimum amount of setup once it is received, uncrated, positioned, and utilities connected. However, the following sections will describe the setup process for future references.


5.2.1 Shampoo and Disinfectant Products

The EVOLUTION Dog Wash was designed around the wash products provided with the unit,



TROPICLEAN and KENNELSOL. The solution ratios suggested in this manual are for those products only. **Warranty is considered voidable if Buyer does not use approved shampoo and disinfectant products Tropiclean (Specifically formulate for Evolution Dog Wash Company) and KennelSol, throughout the warranty period.**

Product Guide, Dispensing, Usage			
Product	Description	Dispensing	Usage
	Shampoo Berry Clean's unique formulation is designed to clean the dirtiest pets while creating a shiny, luxurious coat. Natural protein and raspberry extract replenish the natural moisture balance of the skin and coat. Routine bathing leaves the skin and coat soft, shiny and looking great.	1:8 Ratio 150 Strokes/Min	Approx. 100 Washes
	Flea and Tick Shampoo NEEM Shampoo is deep cleaning and effective in relieving irritations due to flea and tick bites. Helps remove doggie odor. This high lathering shampoo cleans the dirtiest pets while creating a healthy, shiny coat. Also used as a de-greasing shampoo.	1:5 Ratio 120 Strokes/Min	Approx. 100 Washes
	Conditioner Kiwi Conditioner's advanced conditioning formula with intensified moisturizers soothes dry, sensitive skin. Rich botanical conditioners create a healthy sheen. Eliminates static and tangles, leaving the coat soft and easy to comb.	1:8 Ratio 150 Strokes/Min	Approx. 100 Washes

	<p>Disinfectant</p> <p>A total system of high-quality product that is safe, effective and environmentally friendly. Use for every aspect of cleaning, disease control, odor control and system maintenance in your unit. Kills pathogens, does not require rinsing and is safe around animals and people.</p>	<p>1:64 Ratio 100 Strokes/Min</p>	<p>Approx. 400 Washes</p>
---	--	---	-------------------------------

5.2.2 Product Setup

Inside the EVOLUTION is 4 gallons of product in gallon containers. They are marked Berry Clean, Neem Flea and Tick Shampoo, Kiwi Conditioner and KenneLSol Disinfectant. Identify each product and place inside the EVOLUTION cabinet on the middle shelf as shown.

Berry Clean
Shampoo

Neem
Flea & Tick
Shampoo

Kiwi
Conditioner

Disinfectant



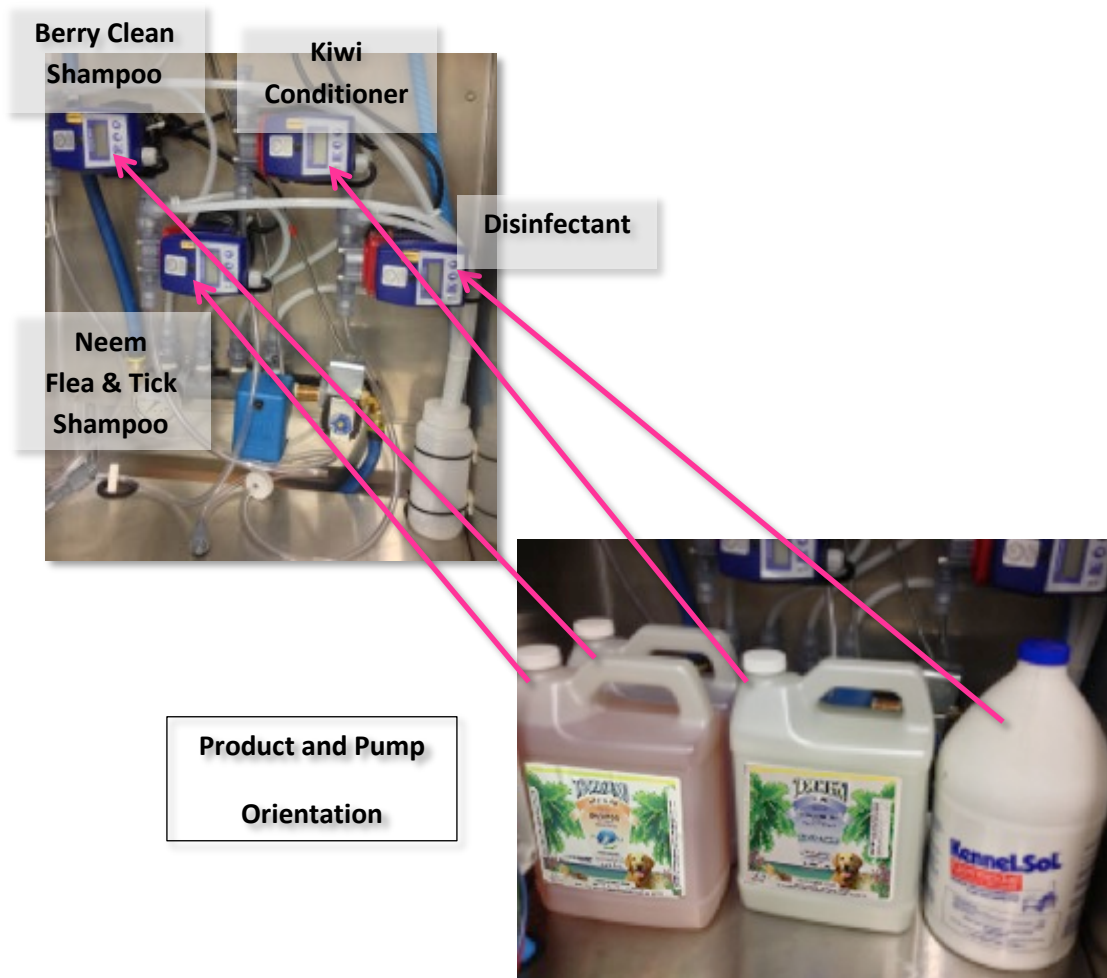
Remove the caps and cover to each product. Place the product suction hose and foot valve into the 1-gallon containers and screw on the white lid to the containers. See diagram for proper product orientation.



Product
Suction Hose
and Foot
Valve

Screw On
Cap





5.2.3 Product Dispensing Pumps

The EVOLUTION uses the best product-metering pump recognized in the dispensing industry. The Walchem EZ Series electronic metering pump, with microprocessor control, offer precise product injection and ratio control. The compact size and simple control make it ideal for the EVOLUTION application.

On/Off Switch

Increase Stroke

Decrease Stroke



Product Dispensing Pump

Bleeder Valve



Injector Hose

Bleeder Hose

Dosing Pump

**Pump Components
And Connections**

Suction Hose Nut

Product Suction Hose



5.2.3.1 Pump Priming

During the Quality Control check prior to shipping, each pump is activated, set to the proper dosing measure, and primed with water. This will allow you to place the proper product suction hose into the proper product and begin using the EVOLUTION. It will take several minutes for the product to be provided to the pump through the hose. In the event the pump needs to be primed follow these procedures:

1. Ensure the product suction hose, foot valve, and cap have been installed.
2. Turn on the unit using the operator switch.
3. Choose the product to be primed on the selection switch on meter.
4. Open the bleeder valve by turning counterclockwise.
5. Increase the stroke speed by pressing the up arrow to 360 strokes/min.
6. Observe the product coming up the suction hose. (See Below)
7. When product reaches pump close bleeder valve.
8. Decrease the stroke speed by pressing the down arrow to original setting.
9. Turn product selection to the off position and turn off operator switch.

In the event that the pump will not prime, perform the steps on the next page.

Suction Hose Parts Description



Suction Hose Nut

Suction Hose

Ferrule

Swedge Fitting

O-Ring



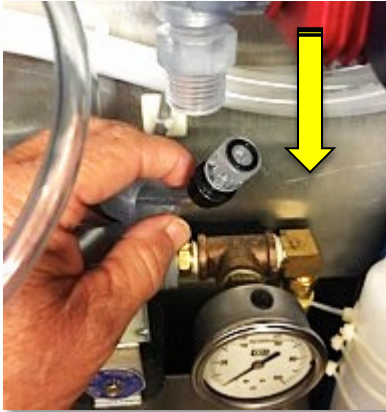
Locate troubled pump and look for the Hose Nut on the bottom of the pump.



Remove the Hose Nut, by hand, by turning to the left to loosen.



Slide Hose Nut down the Suction Tube, after loosening, revealing the Ferrule, top of Suction Tube and Swedge.



Pull the Swedge gently down and out of holder. Ensure that O-Ring is in place and not damaged by being over tightened.



Inspect components for damage. Separate components as shown insuring that Ferrule is not press too far up the Suction Hose and Swedge. Ensure that Suction Hose is completely seated against the Swedge.



After inspecting and adjusting components, ensure that O-Ring is in place. Gently push Swedge into its holder and put Hose Nut into place.



Tighten Hose Nut by turning to the right. Only hand tighten, do not use a wrench.

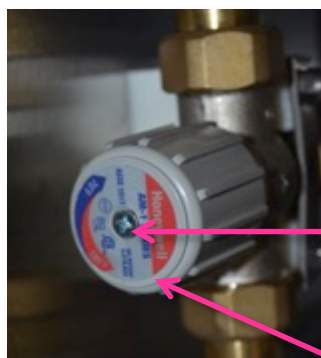
After parts removal, adjustments, and re-assembly return to Section 5.2.3.1 "Pump Priming", and repeat the steps.



5.2.4 Thermostatic Water Mixing Valve



The EVOLUTION water temperature is maintained by providing hot water to the unit or installing the optional water heater. The water temperature is maintained with a Thermostatic Water Mixing Valve. The water temperature is set to 73 degrees coming from the factory, this is what the water temperature will be at the nozzle providing adequate hot water is supplied to the unit. This



temperature can be adjusted at the mixing valve.

Locking Screw

Adjusting Knob

To adjust the preset water temperature on the EVOLUTION follows these steps:

1. Loosen the locking screw by backing out approx. 1/2 inch.
2. Pull the adjusting knob out towards the front of the unit.
3. Turn the EVOLUTION on using the operator's key, select rinse, press nozzle button.
4. Turn the adjusting knob counterclockwise while feeling the water coming from nozzle.⁷
5. Once you are satisfied with the water temperature, reverse the steps above.

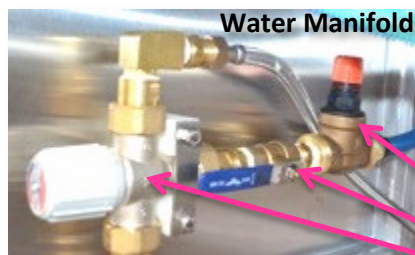


5.2.5 Water Pressure Regulator

The Water Pressure Regulator is located on the Water Manifold and is used to restrict the flow of water through the system to protect the animals being washed. The recommended incoming water pressure should be Min. 20 PSI – Max. 60 PSI.



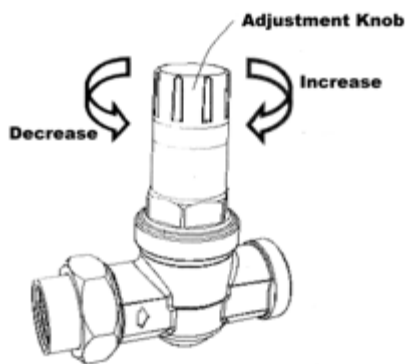
The Acme EB35 1/2 Pressure Reducing Valve (Water Regulator) is preset from the factory at 45 PSI.⁸



Water Manifold
Press Regulator
Shut Off Valve
Thermostatic Valve

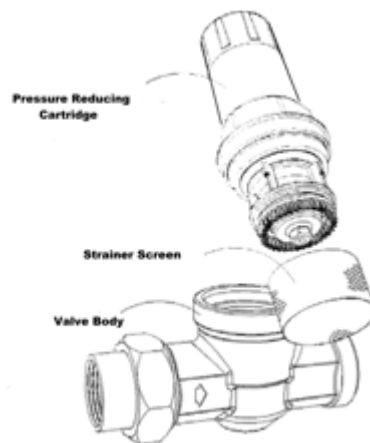
⁷ Typically water that is comfortable to humans is too hot for animals, do not make water too warm.

⁸ Caution should be used when adjusting this valve not to exceed a pressure greater than the animal can tolerate.



To adjust the water pressure lift the orange Range Adjustment Knob upward, turn counterclockwise (-) to decrease pressure and clockwise (+) to increase the pressure. Snap the orange knob back down after adjusting. In the event that maintenance is required on the reducing valve, close the isolating valve prior to the reducer before performing any maintenance. Use a wrench to unscrew the Pressure Reducing Cartridge. Remove the cartridge by

pulling straight up. Clean cartridge with cold water only. Clean and/or replace the Strainer Screen before re-installing the cartridge. Screw the cartridge back into the Valve Body and re-tighten to the following torque: 10 lb/ft. Be careful not to over tighten the cartridge and risk cracking the valve body.



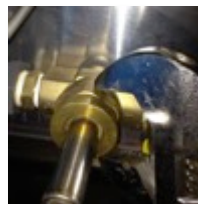
5.2.6 Solenoid Maintenance



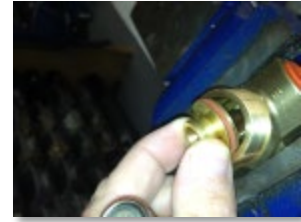
The water solenoid valve controls the flow of water through the EVOLUTION. It is a positive shutoff valve, controlled by the electromagnetic coil on the valve. Once power has been applied to the coil the valve will allow water to flow thru the unit and out the wash gun hose and wash gun, providing the push

button has been pushed on the wash gun. Once power has been removed the solenoid will close and no water will flow. In the event that water continues to come out the wash gun after the solenoid has been de-activated there is a good chance that trash in the valve is preventing it from completely closing. This can be caused by improper clean up from plumbing connections, trash in the system, or most likely a build-up of calcium deposits from "hard water". The following procedures will lead you through correcting this problem.

1. Remove the coil from the valve by loosening the screw on top of the coil.
2. Remove the stem by loosening the large brass nut on the solenoid body.
3. Once you have the nut loose, then carefully pull on the stem to remove the plunger. Place hand under valve to catch any falling parts.
4. As you will see on the plunger it is shaped with a point. The point goes into the seat and seals off the pressure on the valve. Clean any debris from the seat and point on the plunger.



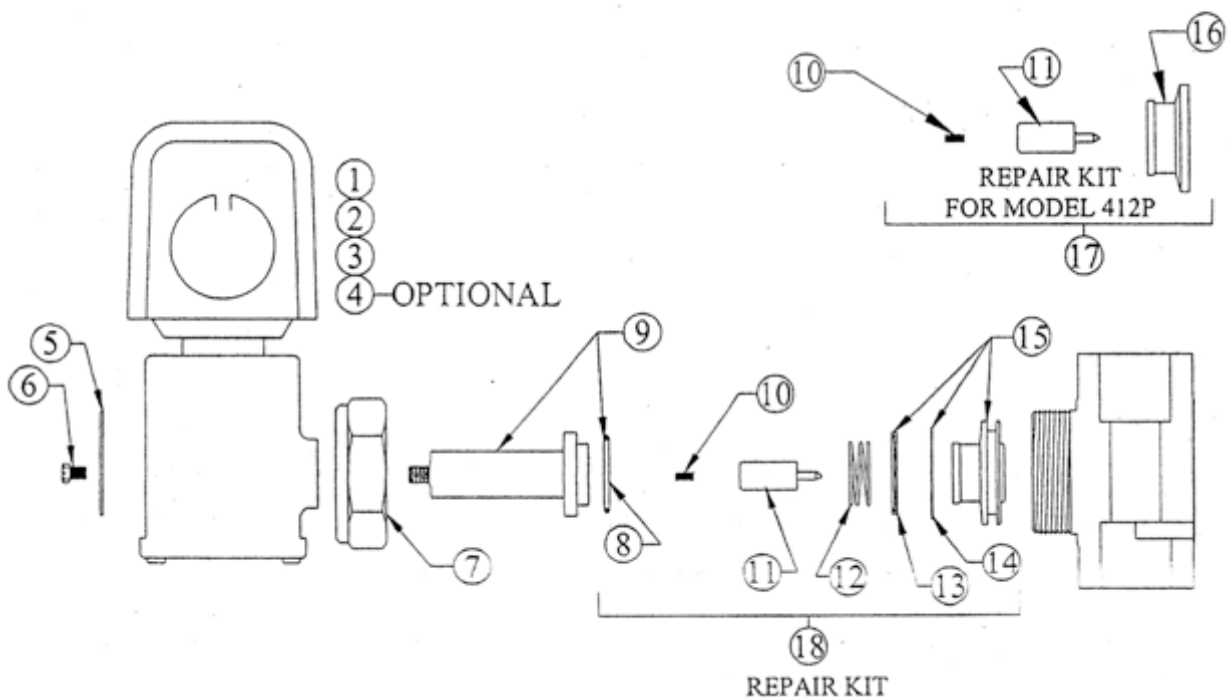
5. The seat can be removed by grabbing the raised portion and lifting out. Turn the seat over and observe the small orifice hole in the seat, this is most likely where trash will be found.
6. Once any trash has been removed then re-assemble the solenoid by reversing the above steps.



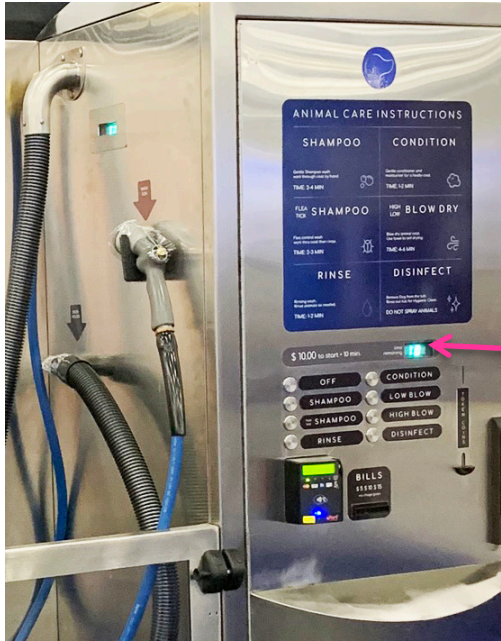
MODEL 412P, A413P, A414P, A416P & A418P SOLENOID VALVE INSTALLATION INSTRUCTIONS

SOLENOID VALVES, GENERAL PURPOSE

MODELS 412P, A413P, A414P, A416P, A418P



5.2.7 Digital Timer Setup



The EVOLUTION is supplied with one of the most reliable Digital Timer/Display available on the market today. It is user friendly, multi price and time settings, and the brightest liquid fluorescent display that is sunlight readable.

The timer comes preprogrammed to what you elected in your purchase options.

Remote Display
Main Display

5.2.7.1 Digital Timer Programming

This section is provided for information only – your timer will come preprogrammed to the correct setting per what was selected when purchased.

Observe the timer front and back and orientate yourself with its display and control buttons.

Front



Liquid Fluorescent Display

Power Plug Connection

Mode Button

Set Button



Back

The following steps will guide you through a complete setup. Once you have begun programming you will need to complete the cycle for the programming to take effect.

Pressing the mode button will advance you through the different programming modes.



Once you are in a programming mode you will use the set button to advance to the options available in that mode.



Press and hold the MODE button for 5 seconds to enter first programming sequence.



FUNCTION: (PET) The function mode allows the timer to be set to a different mode, activating additional functions. For the EVOLUTION this should be showing "PET", if it does not, then press the SET button until "PET" shows in the display then press the MODE button to advance to the next sequence.



UNIT NUMBER:(01) This is not currently being used in the EVOLUTION.



NATIONALITY:(DOM) The nationality setting is used to setup pricing and display of the EVOLUTION, Domestic (DOM) is the default setting.



TOKEN:(T:01) This is not currently being used in the EVOLUTION.



PRICE:(10:00) The EVOLUTION default price is \$10 for 10 minutes, to change press the SET button, this will advance the price in .25 increments.



TIME:(10:00) The EVOLUTION default time is 10 minutes, to change press the SET button, this will advance the minutes, press MODE to move to the seconds press the SET button to advance the seconds.



SECONDS PER ADDITIONAL COIN:(C:015) The seconds per additional coin is calculated by the price and time setup. In the \$10 for 10 minutes scenario it will show 15 seconds. This is (10 min x 60 secs)/40. If you want your customer to receive a greater value then you can change this setting and the next coin, after the price is satisfied will give your set time to the customer.



GRACE TIME:(G:020) The EVOLUTION offers grace time to its customers with the default period of 20 seconds. Grace time allows the customer to continue their washing period with the smallest of coin (.25) for the period of time setup for that coin. Scenario –

Customer is in the process of finishing their wash cycle and time expires. The customer just likes a small amount of time to finish and does not want to commit to another 10 minutes of time. The customer may at this time insert coins, tokens, or bills giving them additional time on the meter, but must be done within the grace time period. If this selection is set to “0”, then no grace time is available. The grace time function is only available once per cycle.



HORN:(h:10) When the time reaches the last sixty seconds of the cycle, the horn will beep for the amount set in this setting.

FINISHING THE PROGRAM: After the horn setting has been set/changed, continue to press the mode button until you see the version setting displayed on the screen



SOFTWARE VERSION:(V7.40) Once the last function is set on the timer and the mode button is pressed, then the display will show the current software version of the timer. Once you see this then rest assured that the programming changes have taken effect.

6.0 Operating The Unit

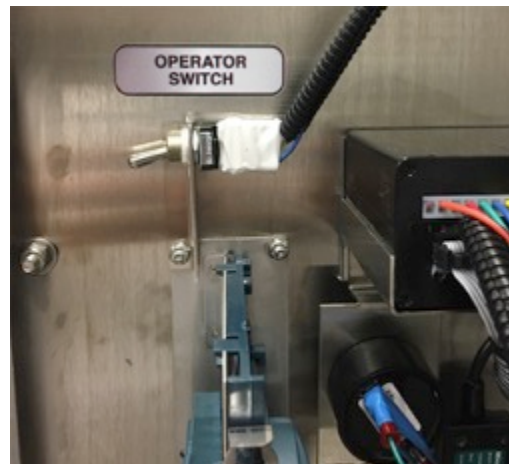
Once you have completed the Uncrating, Inspecting, Leveling and Securing, Utilities Connections, and Setup you are ready to put your EVOLUTION into service and begin collecting revenue. The following section will identify and explain the basics of operations.

6.1 Operations

Operating the EVOLUTION Dog Wash is very simple with just a bit of understanding. It is very important that the owner/operator have a clear understanding on how to operate the unit and be able to instruct the customers in its proper use.

6.1.1 Manual/Bypass – Cabinet Open

For Manual/Bypass operation locate and turn on the operator switch is located to the left of the digital timer when looking at the back of the door. The unit now has complete power and operation capabilities. Any function may be used while the operator switch is in the “on” position. The manual operations will be done while performing maintenance, priming product pumps, or customer operations in the event other possible operational problems. Once one of these operations have been completed, turn off the operator switch.



Warning – you should never leave the Manual/Bypass switch in the “on” position for extended operation or customer operations. Operating in this mode can lead to potential issues if the machine is left unattended.

6.1.2 Customer Operations

The Evolution Dog Wash is designed to offer to the end user/customer the best Dog Wash available in the industry. It is designed for simple, safe, and convenient operation by your customers. The following is the typical flow of how a customer would use the Dog Wash to wash their dog:

1. Customer brings their dog/animal to be washed in the EVOLUTION.

1

CUSTOMER BRINGS DOG/ANIMAL TO BE WASHED IN THE EVOLUTION



2

IF NECESSARY SECURE THE DOG IN THE WASH COMPARTMENT USING THE LATCH/CHAIN



3

MAKE PAYMENT VIA ONE OF THE FOUR OPTIONS: COIN, TOKEN, BILL, OR CREDIT CARD

NOTE: monetary options are owner selectable, so your unit may not have all four of these options installed in your unit)



COIN



TOKEN



BILL



CREDIT CARD

4

THE DIGITAL TIMER DISPLAY WILL START COUNTING DOWN FOR THE WASH CYCLE



5

DOG WASH CONTROL PANEL TYPES:

- Rotary Dial models: EZ, EZ+
- Piezo Touch Button: PLC, PLC+
- LCD-Touch Panel

7 Recommended Wash Flow:

(Below is a list of all functions available, depending on which model you purchased you may have a subset of these functions.)

- a. Once the dog is in the wash tub and wash cycle has started, follow the instructions on the Animal Care Instructions decal detailed below by selecting the function on the control panel:

- i. Shampoo
- ii. Flea/Tick Shampoo
- iii. Rinse
- iv. Condition
- v. Rinse
- vi. Low/High Dry
- vii. REMOVE Dog – Disinfect spray tub area for next customer

ANIMAL CARE INSTRUCTIONS	
SHAMPOO <small>Gentle Shampoo wash work through coat by hand.</small> TIME: 2-4 MIN	CONDITION <small>Gentle conditioner and moisturizer for a healthy coat.</small> TIME: 1-2 MIN
FLEA/TICK SHAMPOO <small>Flea control wash work thru coat then rinse.</small> TIME: 2-3 MIN	HIGH/LOW BLOW DRY <small>Blow dry animal coat. Use towel to aid drying.</small> TIME: 4-6 MIN
RINSE <small>Rinsing wash. Rinse animals as needed.</small> TIME: 1-2 MIN	DISINFECT <small>Remove Dog from the tub. Rinse out tub for Hygienic Clean.</small> DO NOT SPRAY ANIMALS

- b. Once the function is selected, remove the hose from its holder and press the activate button on the nozzle to begin the spray of product on the dog.
- c. Once complete with each function, press the nozzle button to turn off the spray to select the next function.
- d. When ready to select the dry functions, turn off the nozzle and hang it back on its holder and remove the dryer hose.
- e. Once Dog is completely dry, REMOVE dog from tub area and spray Disinfectant around the tub in preparation for the next customer.



As with any piece of equipment, the maintenance to the EVOLUTION is the key to its longevity. Ensure that the person(s) performing the maintenance understands the steps and tools needed to perform the maintenance. The following is a list of suggested maintenance items. If an operational problem occurs it should be addressed immediately to prevent downtime or possible damage to the EVOLUTION. You will develop your own procedures based on your business model.

7.1 Cleaning Procedures



Suitable clothing, hand and eye protection should be used prior to any cleaning procedure.

1. Use the operator switch to turn the EVOLUTION on, select the rinse option on the rotary dial and wash the tub area of the dog wash using the dog washing gun, rinse all the excess waste to the edges and under the floor and turn off gun.
2. Using the lifting tool, lift the floor and support using the support rod under the floor.
3. Carefully gather all of the waste hair prior to removing the square hair guard and properly dispose of, do not dispose of into a waste drain.
4. Remove the square hair filter in the middle of the floor, clean any large remaining waste and properly dispose.
5. Turn the wash gun on and rinse the tub area again, pushing the waste towards and into the center filter/drain, while doing so wash the bottom side of the floor.
6. Remove the cylindrical filter from the drain in the middle of the floor. Do this by lifting out the basket using the lip to assist removal. Empty the contents into the trash, again not disposing into the waste drain system. Do not attempt to wash anything while this basket is removed. Replace basket and do any other washing that may be needed at this time.
7. Replace the square primary drain.
8. Turn the wash gun on and select the disinfect option on the menu, wash underneath the floor and the complete wash tub area.
9. Lower the floor and wash the complete tub area with disinfectant.
10. Turn off gun and operator key and remove key.
11. Using a soft cloth, wipe over the meter front, menu, and dog wash area. Do Not use abrasive solvents, powders or paste.
12. Clean the stainless steel by wiping down with a light oil spray such as WD-40. Use caution if using any type of stainless steel polish and follow the grain of the panel being cleaned. Avoid using cleaner on Decals or Plexiglass.

See Pictures at the end of this section for orientation.

7.2 Schedules

7.2.1 Daily

- Clean the complete dog washing area following the cleaning procedures listed above.

7.2.2 Monday and Friday

- Collect Revenue from EVOLUTION
- Using the lifting tool, provided, lift the floor platform, remove hair and waste from filters, rinse and disinfect. (Every 25 wash cycles.)
- Open main cabinet, check soap levels and re-supply as needed.
- Check product hoses for proper delivery of product. Perform maintenance or bleeding of the pumps as needed. See manual section **5.2.3.1 Pump Priming**

7.2.3 Monday and Friday

- Clean the stainless steel by wiping down with a light oil spray such as WD-40. Use caution if using any type of stainless steel polish and follow the grain of the panel being cleaned. Do Not use any abrasive cloth, chemical, paste, or cleaner and avoid using on decals and plexiglass.

7.2.4 Monthly

- Clean dryer filter.
- Clean coin mechanism.
- Clean note acceptor.

See Pictures at the end of this section for orientation.

7.2.5 Bi-annually

- Inspect and replace any damaged hoses, fittings, valves, including the wash gun.

7.2.6 Annually

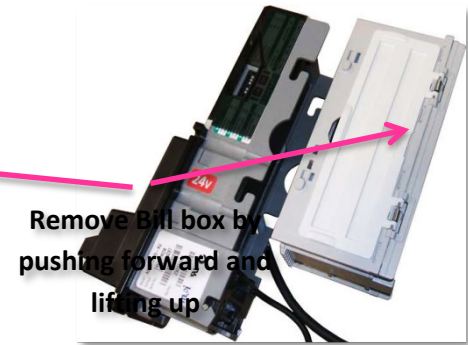
- Inspect and replace dryer hose assembly if needed.
- Remove all products from main cabinet, clean and inspect for possible problems.
- Re-Install any removed objects.
- Re-Prime pumps.
- Inspect and replace any damaged decals if needed.
- Completely clean and polish stainless, paying close attention to any stains that may have occurred.

7.3 Note Acceptor Maintenance

The MEI (Mars) note acceptor has become the standard in the vending and gaming industry. In the event you have a problem you can find your local Mars repair center and have them to diagnose and repair the unit. The following are just a few steps you can take to ensure that your unit is in the most ready condition.



If note acceptor is showing signs of decreased performance perform the following: Remove note box,



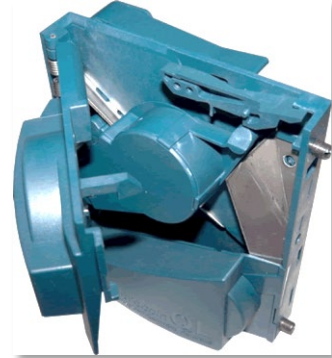
Remove the lower sensor block by raising the locator pin shown and slice the sensor unit out by slightly pulling on it. Once unit is removed clean it with a damp cloth. Pay special attention to the optical lights. DO NOT use harsh solvents.



7.4 Coin Acceptor Maintenance

The EVOLUTION uses the Micro Coin coin acceptor for the features it offers. It will accept coins from \$.25 to \$1.00 and also pre-programmed tokens purchased from The EVOLUTION Dog Wash Company.

Open the upper meter door to access the coin mechanism. Remove the clip holding the coin acceptor in place by pushing upwards on the bent tab. Pull the clip forward, it is hinged on the bottom. With the bracket down grasp the coin acceptor and pull it towards you. Open the coin acceptor door exposing the coin path. Using a damp cloth clean the coin path and then replace the coin acceptor in the reverse order you removed it.



7.5 Dryer Filter Maintenance

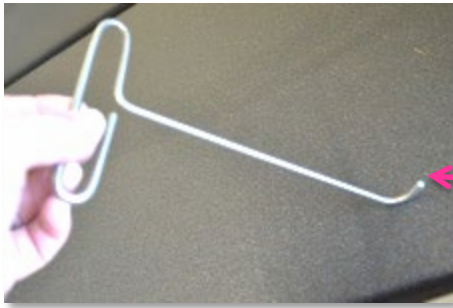
Metro Vacuums and Dryers are the most robust in the industry. They are widely used by groomers around the world for their superior performance, low maintenance, and great quality. This is the dryer that used in the EVOLUTION. It requires little to no maintenance. The following will show how to clean and maintain the filter.



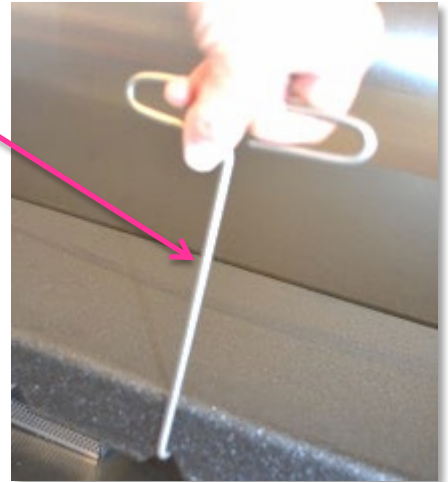
Remove the cover on the bottom of the dryer by turning the black plastic thumb screw. Pull the housing down exposing the filter. Remove the filter and clean using a light soapy solution. Dry the filter and replace in the housing.



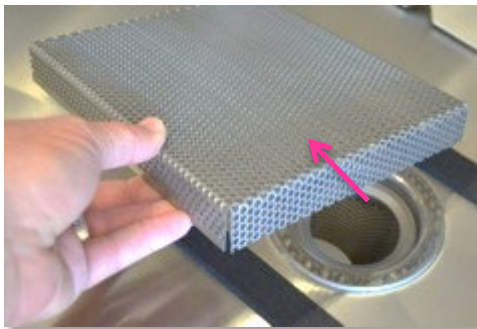
7.6 Other Support Pictures



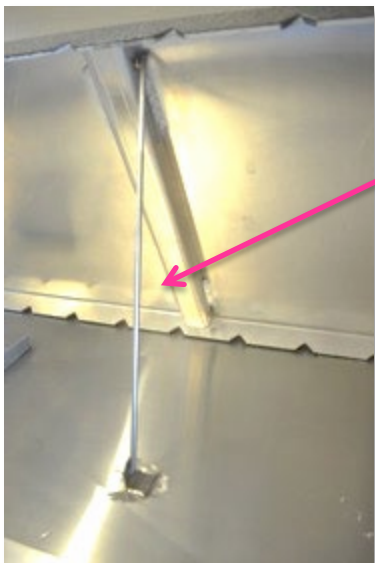
Lifting Tool



Primary Hair Screen

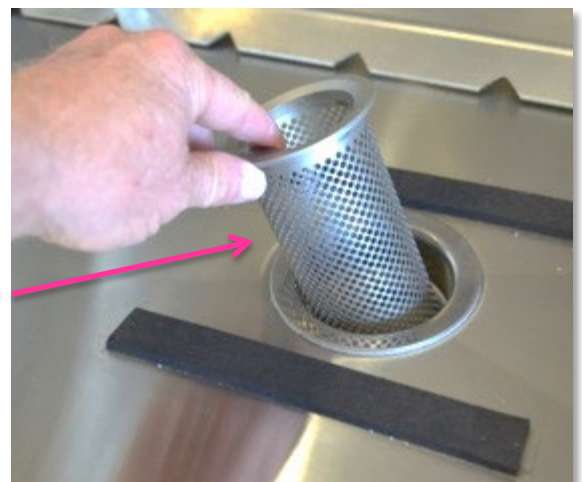


Use these pictures as reference to the cleaning procedures in section 6.1.



Floor Support Rod

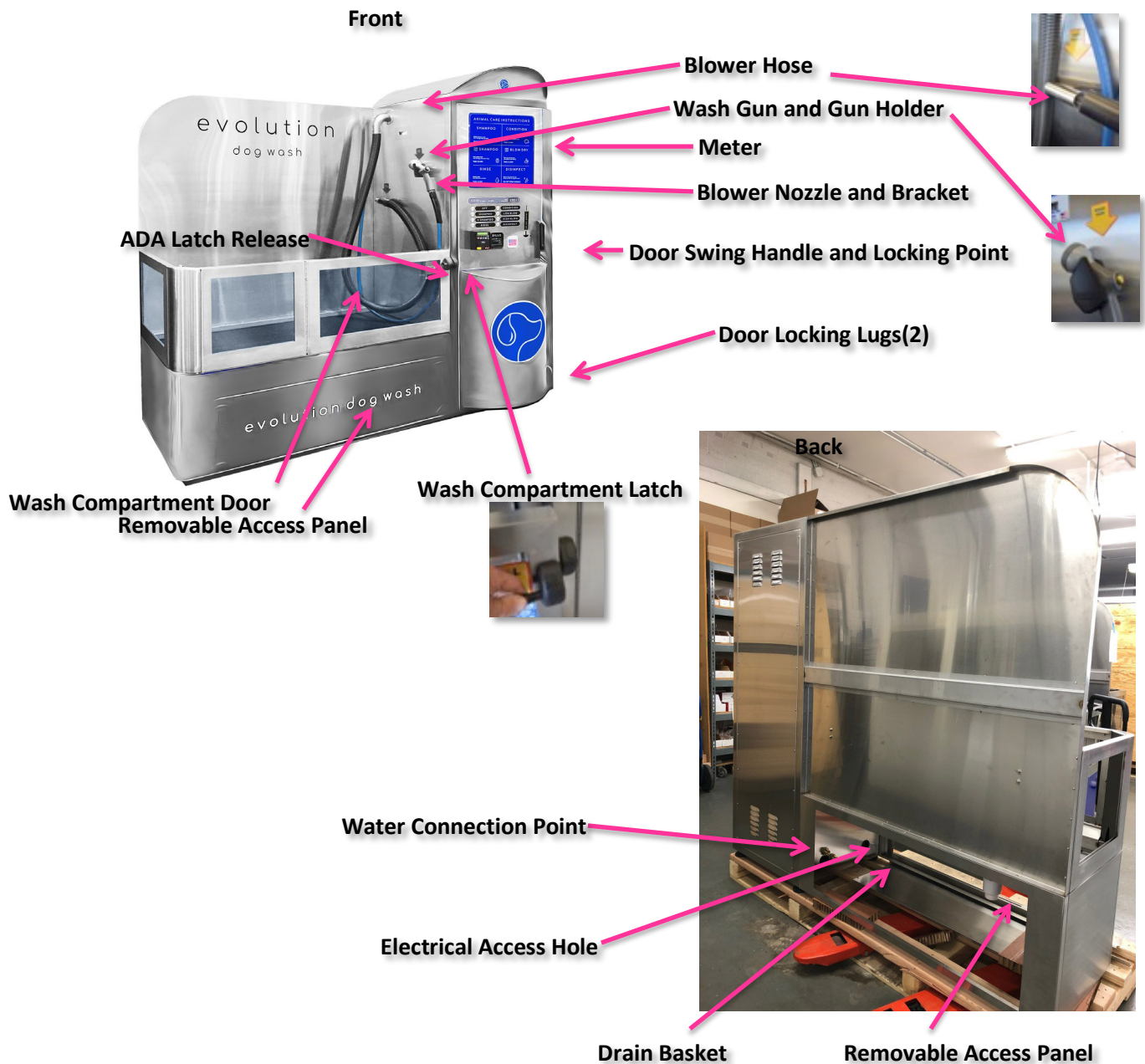
Final Hair Filter



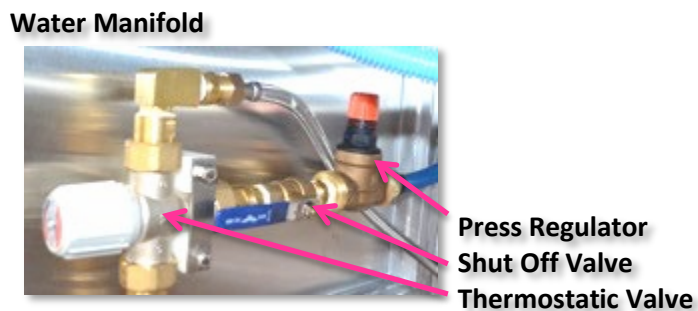
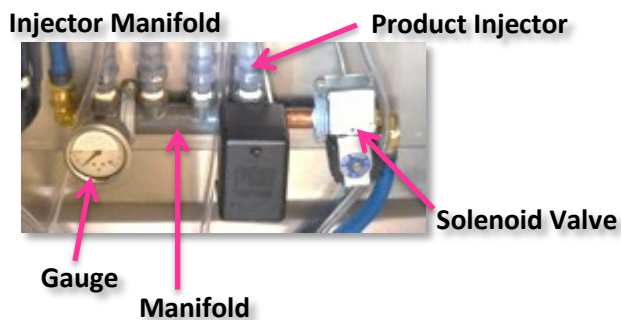
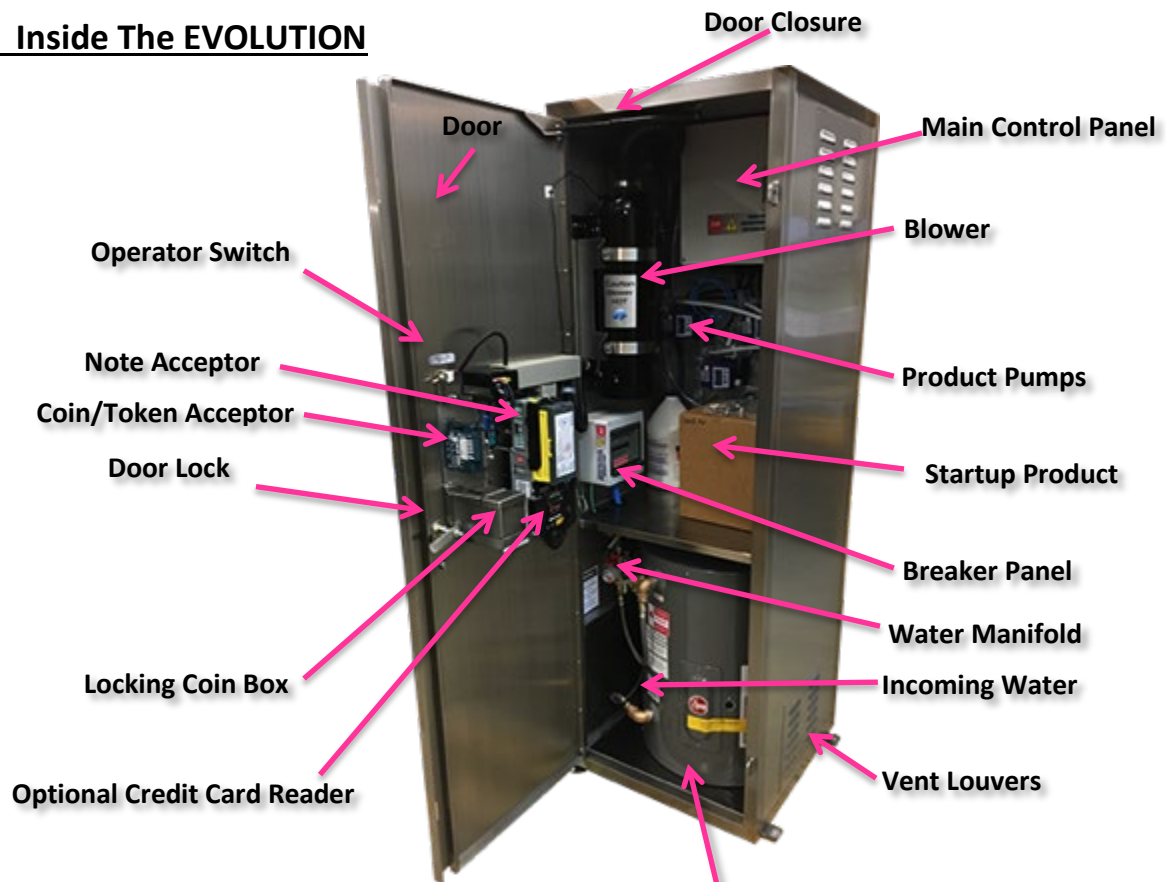
8.0 EVOLUTION Parts Identification and Location

The EVOLUTION Dog Wash Company strives to provide the best products available to us at time of manufacture, but due to design changes by EVOLUTION or providing manufacture the components provided in your EVOLUTION may be slightly different than shown here but will function in the same or similar manner.

8.1 Outside The EVOLUTION



8.2 Inside The EVOLUTION

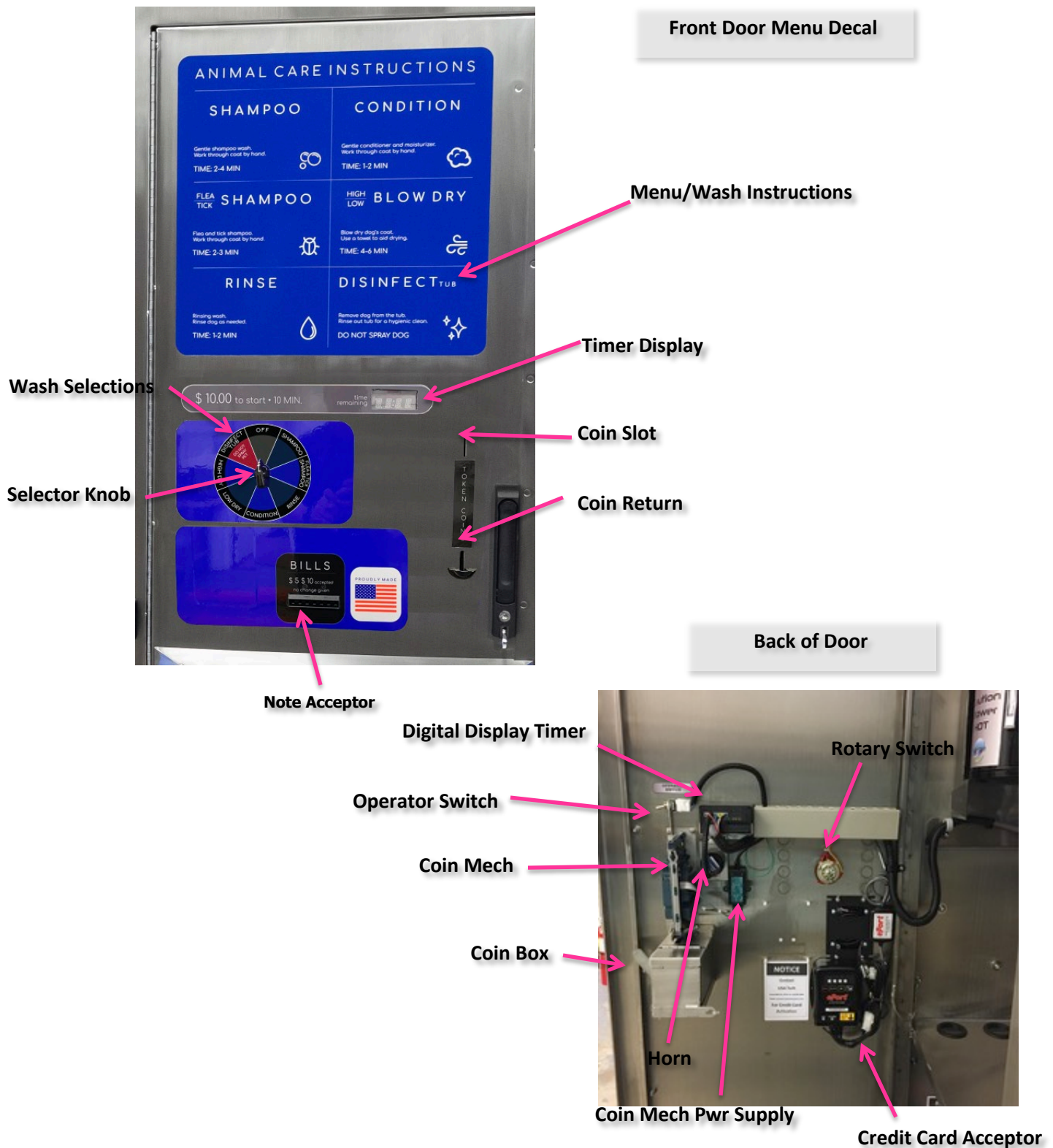


Optional Water Heater Compartment

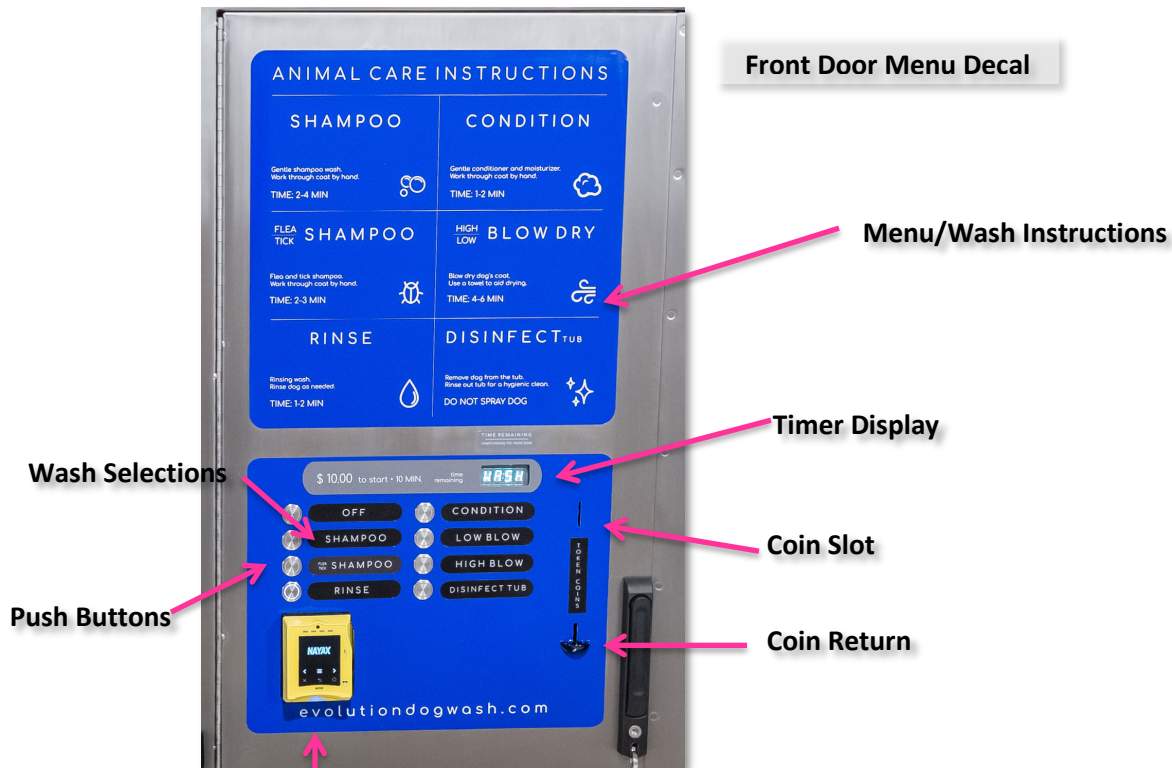


8.3 EVOLUTION Door Component Layout

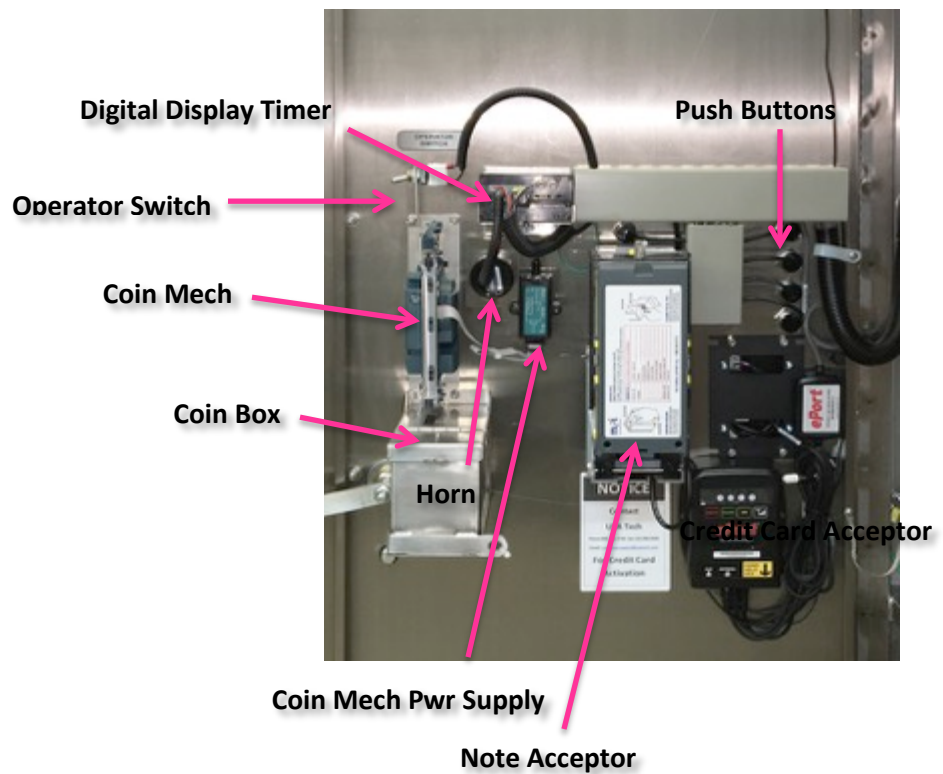
8.3.1 EZ and EZ Plus Models



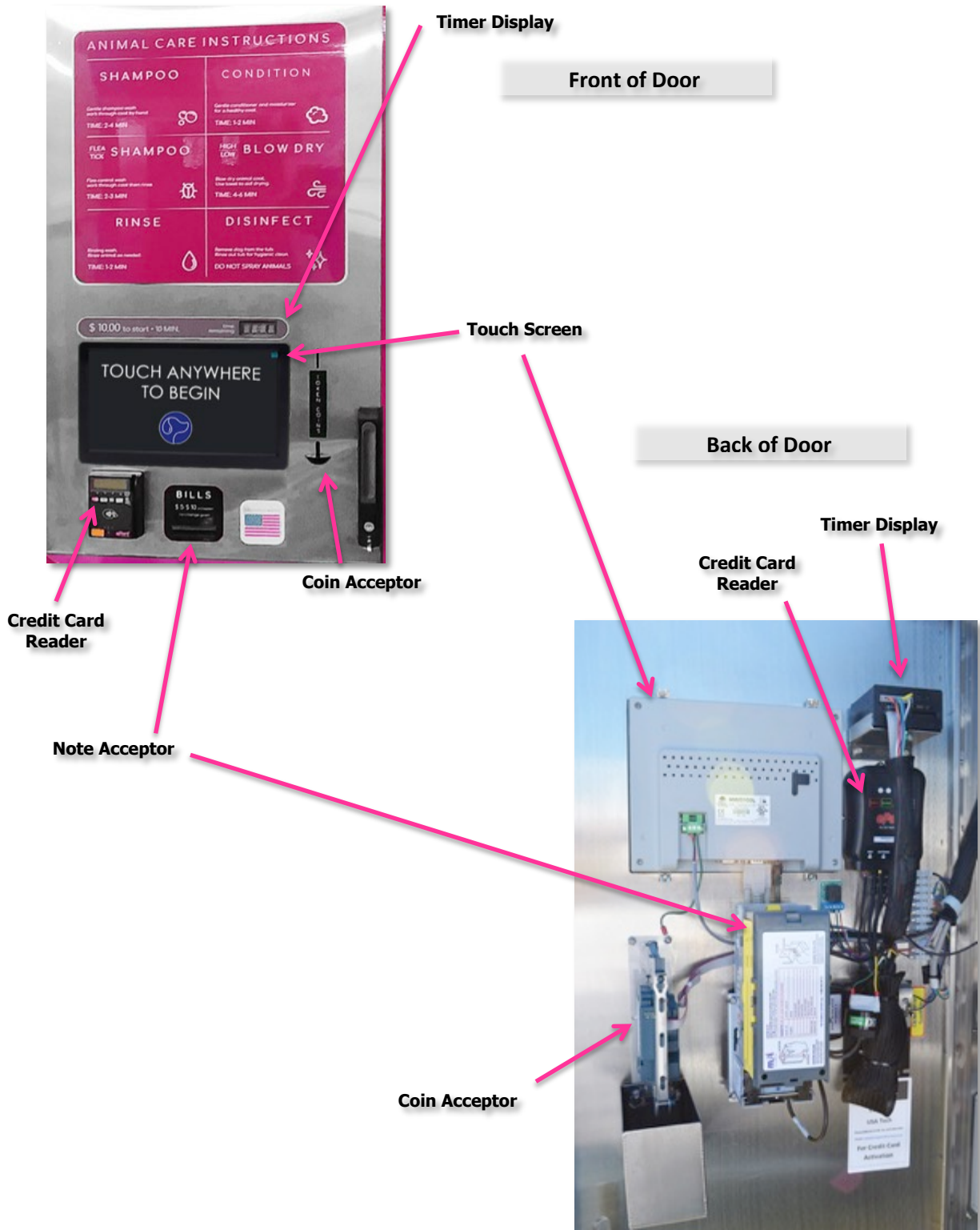
8.3.3 PLC Model



Back of Door



8.3.4 Touch Model



9.0 Troubleshooting

The following section of Troubleshooting will help you to determine the most common problems and fixes related to the EVOLUTION. By no means is this all of the problems and fixes but seem to be the most common.

Troubleshooting The Most Common EVOLUTION Problems

Problem	Solutions
EVOLUTION fails to power up	<ol style="list-style-type: none">1. Ensure that the supply power is turned on to the unit.2. Check circuit breakers in the breaker panel3. Remove main control panel cover and verify that the 5 amp and 10 amp breakers are armed.4. Check primary side of transformer inside the main control panel for voltage of 110 VAC.5. Check secondary side of transformer for voltage of 24 VAC.
No water comes out the wash gun hose when powered up	<ol style="list-style-type: none">1. Make sure the unit water supply has not been turned and there is water coming to the unit.2. Make sure a selection has been made.3. Make sure that either the operator key is in the on position or the timer has time being counted down on it.4. Make sure the wash gun button has been pushed.5. Verify that the water pressure regulator has not been adjusted, allowing a greater pressure than 60 psi to flow through the unit.6. Remove the wash gun and see if water will flow, indicating the wash gun is clogged.7. Verify that the water connection are correct, hot on hot and cold on cold.
The water coming out of the wash gun is cold	<ol style="list-style-type: none">1. Ensure the incoming water supply is hot.2. Ensure the water heater is heating water and is connected correctly.3. Adjust the water thermostatic valve according to the instructions in section 4.2.4
Water leaks out of the wash gun hose after the unit is off	<ol style="list-style-type: none">1. Check the solenoid valve for trash and clear as necessary.
Pump loses prime	<ol style="list-style-type: none">1. Check grey foot valve in product.2. Remove and clean.3. Should not be able to blow thru valve.

Troubleshooting The Most Common EVOLUTION Problems Continued

Problem	Solutions
Wash products are not being dispensed out the wash gun hose	<ol style="list-style-type: none"> 1. Make sure a selection has been made. 2. Check product level inside cabinet. 3. Re-prime the pump. 4. Check for clogged or missing product hose. 5. Ensure that the pump switch is not off.
Unit fails to drain	<ol style="list-style-type: none"> 1. Check and clear any waste in primary and secondary hair screens. 2. Check sanitary waste drain for blockage.
EVOLUTION has low water pressure	<ol style="list-style-type: none"> 1. Check incoming water pressure for proper pressure 20-60 PSI. 2. Verify that no valves have been turned off or partially turned off. 3. Adjust water regulator.
Credit Card unit not accepting cards	<ol style="list-style-type: none"> 1. Check status on front of credit card reader. 2. Contact USA Technologies or Nayax for assistance.
Not receiving Credit Card income into my bank account.	<ol style="list-style-type: none"> 1. Contact USA Technologies or Nayax for assistance .
Unit does not accept \$20 bills	<ol style="list-style-type: none"> 1. Remove note acceptor and set the proper dip switch to accept \$20's.
Leaking after freezing temperatures	<ol style="list-style-type: none"> 1. Check for leaking hoses and replace as needed. 2. Check for leaks at pressure regulator. 3. Check water manifold, gauge, pressure regulator for leaks and repair as needed.
Does not accept bills	<ol style="list-style-type: none"> 1. Check for solid red lite on back of bill acceptor. 2. Check that bill box has been properly installed. 3. Check flashing lights on front of acceptor.
Does not accept coins	<ol style="list-style-type: none"> 1. Verify that there is power to coin acceptor by seeing green LED. 2. Clean coin path.
Tokens do not work	<ol style="list-style-type: none"> 1. Only token from EVOLUTION will work. 2. Send acceptor in for testing and programming.

10.0 MSDS Sheets

10.1 Shampoo – Berry Clean

MATERIAL SAFETY DATA SHEET

SECTION 1: Manufacturer's Name: Cosmos Corporation
Address: P.O. Box 414, Wentzville, MO 63385
Emergency Telephone No.: 800-542-7387
Information Telephone No.: 636-327-5533
Trade Name: **Tropiclean Berry Clean**

SECTION 2: Physical and Health Hazard Ingredients: None

SECTION 3: Physical Characteristics:

Boiling Point: N/A	Specific Gravity: 1.03-1.07
Vapor Density: Approx. 0.9	Evaporation Rate: Not volatile
Solubility in Water: Complete	Color: Pink
Melting/Freezing Point: N/A	Odors: Tropical Smell

SECTION 4: Fire and Explosion Hazard Data

Flash Point: None

Flammable Limits: Product is considered non-combustible

Special Fire Fighting Procedures: None Known

SECTION 5: Reactivity Data

Stability: Stable

Hazardous Decomposition: None known

Incompatibility: Strong oxidizing agents. Strong acids.

Hazardous Polymerization: will not occur

Conditions to avoid: None known when used as directed

SECTION 6: Health Hazard Data

Effects of over exposure: Possible minimal skin and eye irritation.

FIRST AID: Inhalation - Seek fresh air. If breathing is difficult, see a physician. Skin - wash contact area with flowing water.

Ingestion - give two glasses of water to dilute. See Physician Immediately. Induce vomiting only on the advice of a physician. Never give anything by mouth to an unconscious person

Eyes: Remove contact lenses. Flush with water for 15 minutes.

SECTION 7: Occupational Protection Procedures

Respiratory Protection: not required Ventilation: local

Protective Gloves: not required

Waste Disposal Method: Dispose of with solid waste according to Federal, State and Local Regulations.

Eye Protection: Avoid contact with eyes.

The information contained herein is based on the data available to us and is believed to be correct to the best of our ability. However, Cosmos Corporation makes no warranty, expressed or implied regarding the accuracy of this data nor assumes any responsibility for injury from the intentional or non-intentional misuse of this product.

10.2 Flea and Tick Shampoo – Opti-Neem

MATERIAL SAFETY DATA SHEET

SECTION 1: Manufacturer's Name: Cosmos Corporation

Address: P.O. Box 414, Wentzville, MO 63385

Emergency Telephone No.: 800-542-7387

Information Telephone No.: 636-327-5533

Trade Name: TropiClean "Opti Shampoo"

SECTION 2: Physical and Health Hazard Ingredients: None

SECTION 3: Physical Characteristics:

Boiling Point: N/A

Specific Gravity: 1.03-1.07

Vapor Density: Approx. 0.9

Evaporation Rate: Not volatile

Solubility in Water: Complete

Color: Peach

Melting/Freezing Point: N/A

Odors: Tropical fragranced liquid

SECTION 4: Fire and Explosion Hazard Data

Flash Point: None

Flammable Limits: Product is considered non-combustible

Special Fire Fighting Procedures: None Known

SECTION 5: Reactivity Data

Stability: Stable

Hazardous Decomposition: None known

Incompatibility: Strong oxidizing agents. Strong acids.

Hazardous Polymerization: will not occur

Conditions to avoid: None known when used as directed

SECTION 6: Health Hazard Data

Effects of over exposure: Possible minimal skin and eye irritation.

FIRST AID: Inhalation - Seek fresh air.

Skin - wash contact area with flowing water.

Ingestion - give two glasses of water. See physician immediately. Induce vomiting only on the advice of a physician. Never give anything by mouth to an unconscious person. Eyes: Remove contact lenses.

Flush with water for 15 minutes.

SECTION 7: Occupational Protection Procedures

Respiratory Protection: not required

Ventilation: local

Protective Gloves: Standard type rubber gloves

Waste Disposal Method: Dispose of with solid waste according to Federal, State and Local Regulations.

Eye Protection: Avoid contact with eyes.

The information contained herein is based on the data available to us and is believed to be correct to the best of our ability. However, Cosmos Corporation makes no warranty, expressed or implied regarding the accuracy of this data nor assumes any responsibility for injury from the intentional or non-intentional misuse of this product.

10.3 Moisturizer – Kiwi Moisturizer

MATERIAL SAFETY DATA SHEET

SECTION 1: Manufacturer's Name: Cosmos Corporation

Address: P.O. Box 414, Wentzville, MO 63385

Emergency Telephone No.: 800-542-7387

Information Telephone No.: 636-327-5533

Trade Name: Tropiclean Kiwi Conditioner

SECTION 2: Physical and Health Hazard Ingredients: None

SECTION 3: Physical Characteristics:

Boiling Point: N/A

Specific Gravity: 1.03-1.07

Vapor Density: Approx. 0.9

Evaporation Rate: Not volatile

Solubility in Water: Complete

Color: Light Pink

Melting/Freezing Point: N/A

Odors: Tropical Smell

SECTION 4: Fire and Explosion Hazard Data

Flash Point: None

Flammable Limits: Product is considered non-combustible

Special Fire Fighting Procedures: None Known

SECTION 5: Reactivity Data

Stability: Stable

Hazardous Decomposition: None known

Incompatibility: Strong oxidizing agents. Strong acids.

Hazardous Polymerization: will not occur

Conditions to avoid: None known when used as directed

SECTION 6: Health Hazard Data

Effects of over exposure: Possible minimal skin and eye irritation.

FIRST AID: Inhalation - Seek fresh air. If breathing is difficult, see a physician. Skin - wash

contact area with flowing water. Ingestion - give two glasses of water to dilute. See Physician

Immediately. Induce vomiting only on the advice of a physician. Never give anything by mouth to an unconscious person Remove contact lenses. Flush with water for 15 minutes.

SECTION 7: Occupational Protection Procedures

Respiratory Protection: not required

Ventilation: local

Protective Gloves: not required

Waste Disposal Method: Dispose of with solid waste according to Federal, State and Local Regulations.

Eye Protection: Avoid contact with eyes.

The information contained herein is based on the data available to us and is believed to be correct to the best of our ability. However, Cosmos Corporation makes no warranty, expressed or implied regarding the accuracy of this data nor assumes any responsibility for injury from the intentional or non-intentional misuse of this product.

10.4 Disinfectant – KennelSol

Material Safety Data Sheet – KennelSol®



Alpha Tech Pet, Inc.
Your Animal Care Specialist
119 Russell Street, Suite 21
Littleton, Massachusetts 01460

MATERIAL SAFETY DATA SHEET – KennelSol®

Section 1: Product & Company Identification

Trade Name: KennelSol
EPA Reg. No. 62472-1
Product Class: Quaternary Ammonium Compound
Product Use: Disinfectant/Sanitizer
Manufacturer: Alpha Tech Pet, Inc.
119 Russell Street, Suite 21
Littleton, Massachusetts 01460
Telephone Numbers: 24 hr. Emergency Assistance: Alpha Tech Pet, Inc. 1-800-222-5537 or 1-978-500-3455
Product or Company Information: 1-800-222-5537 (Mon – Fri)

Section 2: Composition/Information on Ingredients

Ingredient	CAS #	Wt. %
Alkyl dimethyl benzyl ammonium chloride (C ₁₂₋₁₆)	68424-85-1	1.0 – 2.0
Didecyl dimethyl ammonium chloride	7173-51-5	2.0 – 3.0
Ethanol	64-17-5	0.5 – 1.0

Section 3: Hazards Identification

Emergency Overview	Clear, light blue liquid. Irritating to the eyes, skin, gastrointestinal tract, and respiratory system.
---------------------------	---

Potential Health Effects:

Skin: Direct skin contact may produce severe irritation, which upon prolonged contact, may produce skin burns. Harmful if absorbed through the skin.

Eyes: Based on information available for similar products, it is anticipated that direct eye contact will produce severe irritation and/or burns.

Inhalation: Mists and vapors can irritate the throat and respiratory tract. High vapor concentrations may cause central nervous system effects. Symptoms may include headaches, dizziness, and drowsiness. Harmful if inhaled.

Ingestion: Ingestion can cause gastrointestinal irritation, swelling of the larynx, difficulty in breathing, circulatory shock, convulsions and possibly death.

Chronic: Ingestion of ethanol by pregnant women can cause reproductive toxicity to the fetus.

Section 4: First Aid Measures

Eyes: Flush eyes with large amounts of running water for at least 15 minutes. Hold eyelids apart to ensure rinsing of the entire surface of the eye and lids with water. Get immediate medical attention. If physician not available, flush for an additional 15 minutes and then transport victim to medical care.

Skin or Clothing: Wash with large amounts of running water, and soap if available, for 15 minutes. Remove contaminated clothing and shoes. Get immediate medical attention. Wash clothing and decontaminate shoes before reuse.

Inhalation: If symptoms are experienced, move victim to fresh air. If person is not breathing, call 911 or an ambulance, then, give artificial respiration, preferably mouth-to-mouth if possible. Call a poison control center or doctor for further treatment advice.

Ingestion: Call a poison control center or doctor immediately for treatment advice. Have person sip a glass of water if able to swallow. Do not induce vomiting unless told to do so by a poison control center or doctor. Do not give anything by mouth to an unconscious person.

Note to Physician: Possible mucosal damage may contraindicate the use of gastric lavage. Measures against circulatory shock, as well as oxygen and measures to support breathing manually or mechanically may be needed.

Material Safety Data Sheet – KennelSol®

Section 5: Fire Fighting Measures

Flash Point:	None when heated to 105°C – Tag Closed Cup
Upper & Lower Flame Limits	Not determined.
Extinguishing Media:	Dry chemical, foam, carbon dioxide, water fog or any other agent suitable for surrounding fire.
Fire Fighting Equipment & Instructions:	Firefighters should wear full protective clothing including self-contained breathing apparatus. Cool fire exposed containers with spray.
Hazardous Combustion Products:	Irritating and toxic gases or fumes may be released during a fire.
Unusual Fire Explosion Hazards	Combustion products are toxic.

Section 6: Accidental Release Measures

Spill and Leak Procedures

Emergency Action:	Isolate spill or leak area immediately. Keep unauthorized personnel away. Stay upwind. Keep out of low areas where vapors may accumulate. Eliminate all ignition sources (no smoking, flares, sparks or flames in immediate area).
Spill Cleanup:	Ventilate closed spaces before entering. All equipment used when handling the product must be grounded. Floor will be slippery. Do not touch or walk through spilled material. Stop leak if you can do it without risk. Prevent entry into waterways, sewers, basements or confined areas. Absorb or cover with dry earth, sand or other non-combustible material and transfer to containers.
Large Spills:	Dike far ahead of liquid spill for later disposal. Pump into containers for disposal.

Section 7: Handling & Storage

Handling Procedures:	Avoid contact with skin and eyes. Use good personal hygiene practices. Wash hands before eating, drinking, smoking, or using toilet facilities. Wash thoroughly after work using soap and water.
Storage Procedures:	Keep the container tightly closed and in a cool, well-ventilated place. Keep from freezing. Do not handle or store near an open flame, heat or other sources of ignition. Prevent electrostatic charge buildup by using common bonding and grounding techniques.

Section 8: Exposure Controls/Personal Protection

Engineering Controls:	In processes where mists or vapors may be generated, proper ventilation must be provided in accordance with good ventilation practices.
------------------------------	---

Personal Protective Equipment:

Eyes/Face:	Wear chemical goggles. Use a face shield if splashing is possible.
Skin:	Use impervious gloves (rubber or neoprene) when needed. Wear suitable protective clothing.
Respiratory:	If exposure limits are exceeded or if irritation is experienced, a NIOSH/MSNA approved respirator or an organic/vapor removing cartridge respirator protection device should be worn. Ventilation and other forms of engineering controls are often the preferred means for controlling chemical exposures. Respiratory protection may be needed for non-routine or emergency situations.
General:	Eye wash fountain and emergency showers are recommended.

The following ingredients have established exposure guidelines:

Ingredient	Exposure Guideline	Guideline Value
Ethanol 64-17-5	ACGIH TLV (2005), OSHA PEL & NIOSH REL	1000 ppm (TWA)
	Alberta, British Columbia, Manitoba, New Brunswick, Northwest Territories, (Canada)	1000 ppm (TWA)
	Ontario, Quebec (Canada)	1000 ppm (TWA/EV)
	Saskatchewan (Canada)	1000 ppm (TWA), 1250 ppm (STEL)
	Yukon (Canada)	1000 ppm (TWA), 1000 ppm (STEL)
	Mexico	1000 ppm (TWA)

Material Safety Data Sheet – KennelSol®

	ACGIH TLV (2005), OSHA PEL & NIOSH REL	1000 ppm (TWA)	
All TWAs are for an 8-hour period and all STELs are for 15 minutes unless specifically noted as being for another time period.			
Section 9: Physical & Chemical Properties			
Flash Point:	None when heated to 105°C – Tag Closed Cup		
Specific Gravity:	1.006 (8.35lbs/gal)		
Percent Volatiles:	Not determined.		
Vapor Pressure:	Not determined.		
VOC Content	~ 1		
Vapor Density:	Not determined.		
Viscosity:	1.4489 mm ² /s (cSt) @ 22°C		
Evaporation Rate:	Not determined.		
Pour Point:	Not determined.		
pH :	7.0 – 8.0		
Appearance and Odor:	Clear, light blue liquid with wintergreen fragrance.		
Section 10: Stability & Reactivity			
Chemical Stability:	Material is stable.		
Conditions to Avoid:	Keep away from heat and strong oxidizing agents.		
Incompatibilities:	Strong oxidizing agents (may result in fire.), reducing agents.		
Hazardous Decomposition:	Carbon monoxide, carbon dioxide and toxic hydrogen chloride vapors.		
Hazardous Polymerization:	Will not occur.		
Section 11: Toxicological Information			
Carcinogenicity	No Carcinogenicity data available for this product.		
Acute Oral LD50	>1000 mg/kg for male and female rats.		
Acute Dermal LD50	>2000 mg/kg for male and female rabbits.		
Primary Skin	Possibly irritating or corrosive.		
Primary Eye	Possibly irritating or corrosive.		
Chemicals Ingredients Listed as Potential or Known Carcinogens			
Ingredient	OSHA	NTP	IARC
No ingredients listed in this section.			
Section 12: Ecological Information			
Ecotoxicity	No data available for this product but it is considered toxic to fish.		
Section 13: Disposal Considerations			
Disposal Instructions			
This substance, when discarded or disposed of, is a characteristic hazardous waste according to Federal regulation (40 CFR 261) and is assigned the EPA Hazardous Waste Number of D001. The discarding or disposal of this material must be done at a properly permitted facility in accordance with the regulations of 40 CFR 262, 263, 264, and 268. Additionally, the discarding or disposal of this material may be further regulated by state, regional, or local regulations. Chemical additions, processing or otherwise altering this material may make the waste management information presented in this MSDS incomplete, inaccurate or otherwise inappropriate.			
The transportation, storage, treatment and disposal of this waste material must be conducted in compliance with all applicable Federal, state, and local regulations.			
Section 14: Transport Information			
DOT Hazard Class	Non-Hazardous, not regulated.		
DOT Proper Shipping Name	Refer to bill of lading or container label for DOT or other transportation hazard classification, if any.		

Alpha Tech Pet, Inc.

Trade Name: KennelSol®

April 2010

Page 3 of 4

Material Safety Data Sheet – KennelSol®

Section 15: Regulatory Information

TSCA Status

While all ingredients are listed on the TSCA Chemical Inventory, this product is regulated as a pesticide under the Federal Insecticide, Fungicide and Rodenticide Act (FIFRA) and not subject to the TSCA Inventory rules for FIFRA uses.

Other Chemical Inventories

All components of this product are listed on the following inventories: Canada (DSL), China, and Philippines. One or more ingredients are not listed on the following inventories: Australia, European Union, Japan and Korea.

CERCL/SARA

SARA Title III, Sections 311/312 – This act requires reporting under the Community Right-to-Know provisions due to the inclusion of the following components of this material in one or more of the five hazard categories listed in the 40 CFR 370: **Classification of this product:** Immediate, Fire

SARA Title 313 – This act requires submission of annual reports of releases of the following components of this material if the threshold reporting quantities, as listed in 40 CFR 372, are met or exceeded:

Chemical Name	CAS No.	Maximum Concentration	Comment
No ingredients listed in this section.			

Reportable Quantities/Threshold Planning Quantities: CERCLA requires notification of the National Response Center (Telephone 1-800-424-8802) in the event of a release of quantities of the following hazardous materials contained in this product, if the release is equal to or greater than the Reportable Quantities (RQs). SARA 302/304 requires emergency planning, including agency notification, for possible release of the following components of this material, based upon the Threshold Planning Quantities (TPQs) and/or release of Reportable Quantities.

Chemical Name	Reportable Quantity (RQ)	Threshold Planning Quantity (TPQ)
No ingredients listed in this section.		

State & Provincial Right to Know & Selected Regulatory Lists

The following ingredients appear on various state right to know lists and/or California's Proposition 65 List

Chemical Name	State List
Benzyl Chloride (trace < 100 ppm)	AZ, CA, CAP65C, CT, IL, MA, MN, NJ, PA, RI
Ethanol	AZ, CA, CAP65R (ingestion only), CT, ID, MA, MN, NJ, PA, RI

AZ – Arizona Ambient Air Quality Guidelines

IL – Illinois Toxic Air Contaminant - Carcinogenic

CT – Connecticut Hazardous Air Pollutants

MA – Massachusetts Right to Know List

CA – California Director's List of Hazardous Substances

MN – Minnesota Hazardous Substances List

CA65C – California Prop 65 Carcinogen

NJ – New Jersey Right to Know List

CA65R – California Prop 65 Reproductive Toxin

PA – Pennsylvania Right to Know List

ID – Idaho Non-carcinogen Toxic Air Pollutants

RI – Rhode Island Hazardous Substances List

WHMIS Classification: E, D2B. This product has been classified in accordance with hazard criteria of the Controlled Products Regulations and the MSDS contains all the information required by the Controlled Products Regulations.

Section 16: Other Information

Current Issue Date: April, 2010
Previous Issue Date: None
Changes from Previous Issue Date: New MSDS

Hazard Ratings	HMIS (II)	NFPA
Health	3	3
Flammability	0	0
Reactivity	0	0
PPE	X	

Disclaimer

Disclaimer: Nothing contained herein grants or extends a license, express or implied, in connection with patents, issued or pending, of the manufacturer or others. The information contained herein is based on the manufacturer's own study and the works of others. The manufacturer makes no warranties, expressed or implied, as to the accuracy, completeness, or adequacy of the information contained herein. The manufacturer shall not be held liable (regardless of fault) to the vendee's employees, or anyone for any direct, special or consequential damages arising out of or in connection with the accuracy, completeness, adequacy or furnishing of such information. The buyer assumes all risks of the use and/or handling.